



PARK DISTRICT
of HIGHLAND PARK

Larry Fink Park Tot Lot Renovation Design Selection Results

Thank you again to all those who attended the September 26, 2024, Community Open House and who participated in the online survey. Refined designs were shared to collect feedback to select the final playground design. The Park District heard from over 30 participants.



Playground Design Preferences

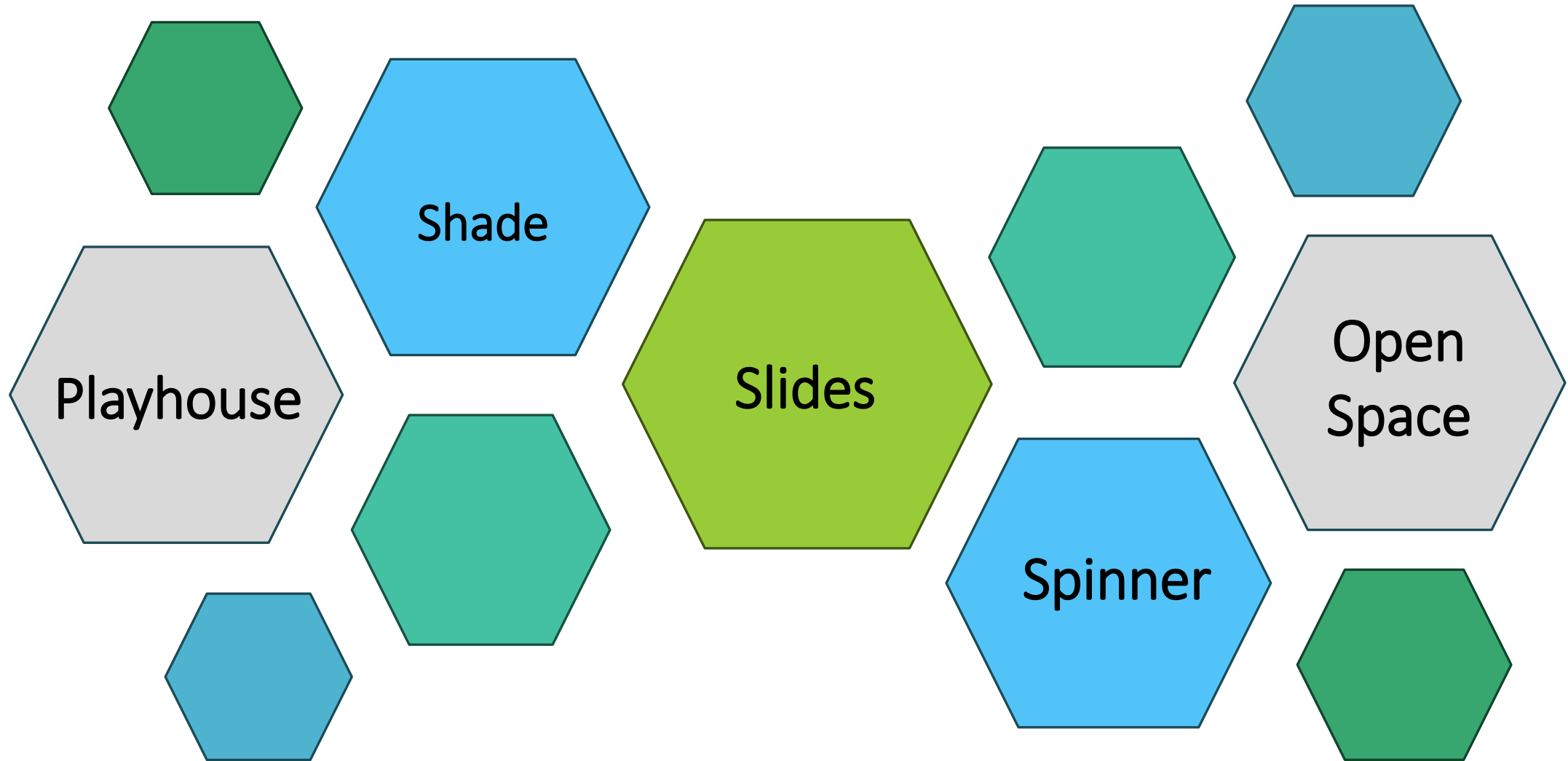
67% - Prefer Option 1

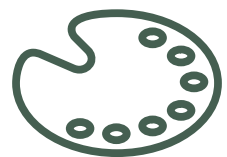


33% - Prefer Option 2



What do you like about the options shown?





Playground Color Palette Preference

A (19%)



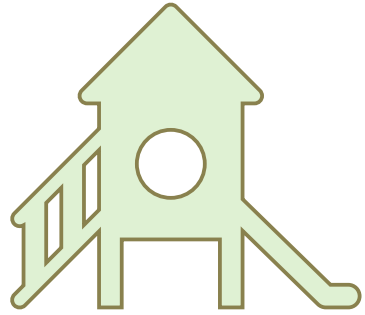
B (53%)



C (28%)



Priority of Poured-in-Place (AKA Rubber) surfacing



➤ **65% - would prefer more playground equipment and less Poured-in-Place Surfacing**

To work within the approved budget, the Park District must prioritize elements in the design, Poured-in-Place surfacing is a costly element.

Using engineered wood fiber* (AKA woodchips) instead of poured-in place in portions of the playground can free up money for equipment. In contrast, a design where the entire playground has poured-in place surfacing would have less equipment due to budget constraints.

Both design options shown represent an emphasis on more playground equipment and portions of the playground with engineered wood fiber surfacing.

*NOTE: engineered wood fiber surfacing = woodchips that are shredded specifically for playgrounds