

ROSEWOOD PARK PLAYGROUND RENOVATION 2024 INITIAL FEEDBACK SUMMARY

This summer, community feedback was collected to help select playground equipment for Rosewood Park's playground. The design options will be refined, and the community will be asked to select their preferred design option in September.

Thank you again to all those who participated in the survey and engagement opportunities at the park, which were promoted through postcards, the PDHP website, social media, & ParkLine.

- Online Survey: July 11 - August 19, 46 Respondents
- Engagement at the Park: July 24, 29, 30, & Aug. 7, 12, over 20 participants



Playground Design Preferences



46% - Prefer
Option 2



Playground Design Preferences

39% - Prefer Option 1



15% - Prefer Option 3





Option 1 - Top 5 Favorite Features

1. Layout
2. Spinner
3. Climbing
4. Swings
5. Height



COLOR KEY

RED
GREEN
BLUE
TAN
TAN/GREEN



Option 2 - Top 5 Favorite Features

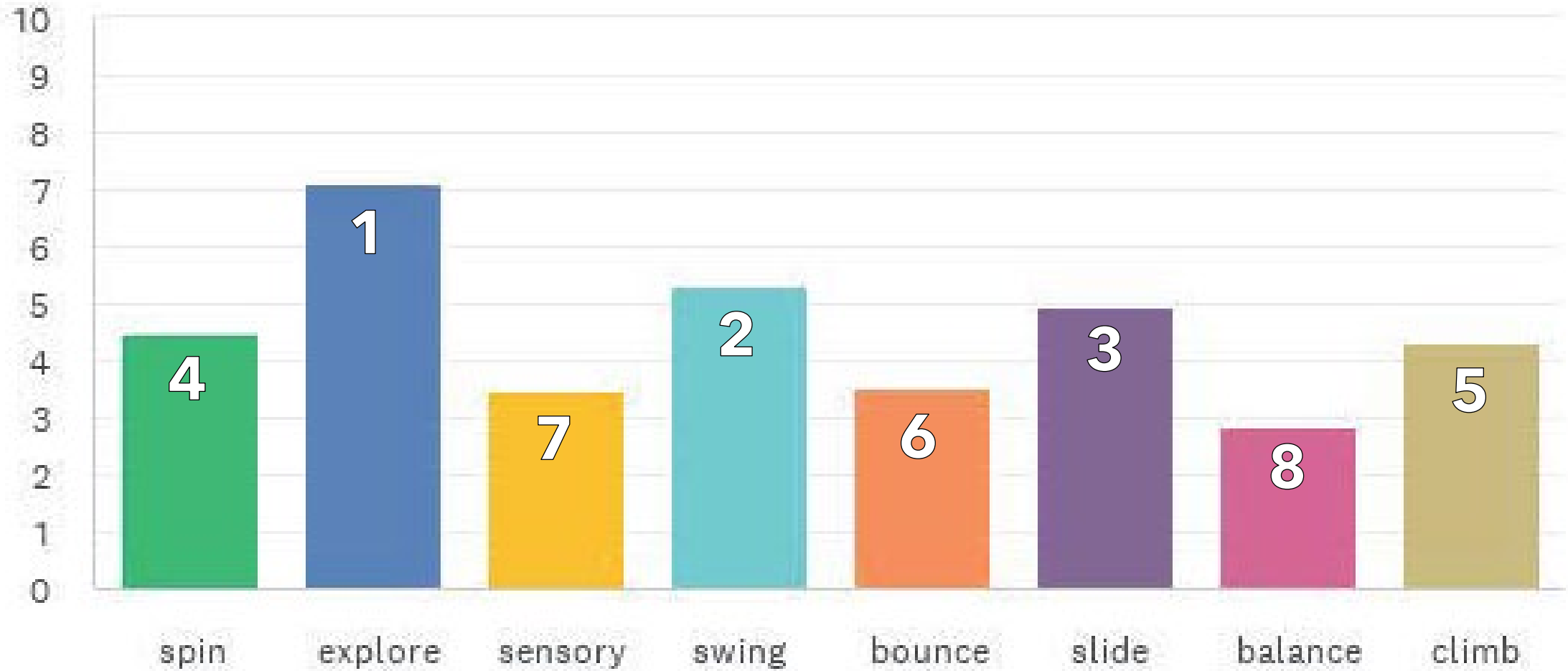
1. Slides
2. Swings
3. Climbing
4. Layout & Height
5. Theme



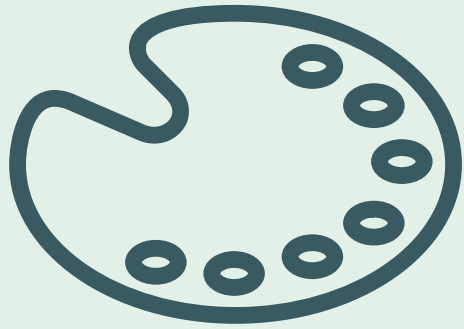
Option 3 - Top 4 Favorite Features

1. Theme
2. Layout
3. Rock Climber
4. Climbing

Play Element Priority Ranking Results



Playground Color Preference

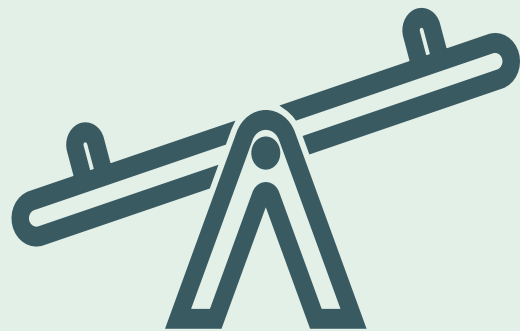


89% - Yes, I have a color preference

- 57% - prefer a bright color palette
- 43% - prefer natural color palette

11% - No, I do not have a color preference

Playground Theme Preference



74% - Yes, I have a theme preference

- 42% - suggested nautical/beachy theme
- 16% - suggested nature/animal theme
- 13% - suggested pirate theme

26% - No, I do not have a theme preference



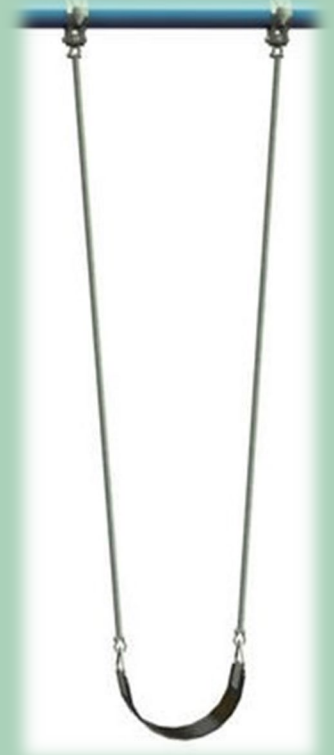
80%



24%



34%



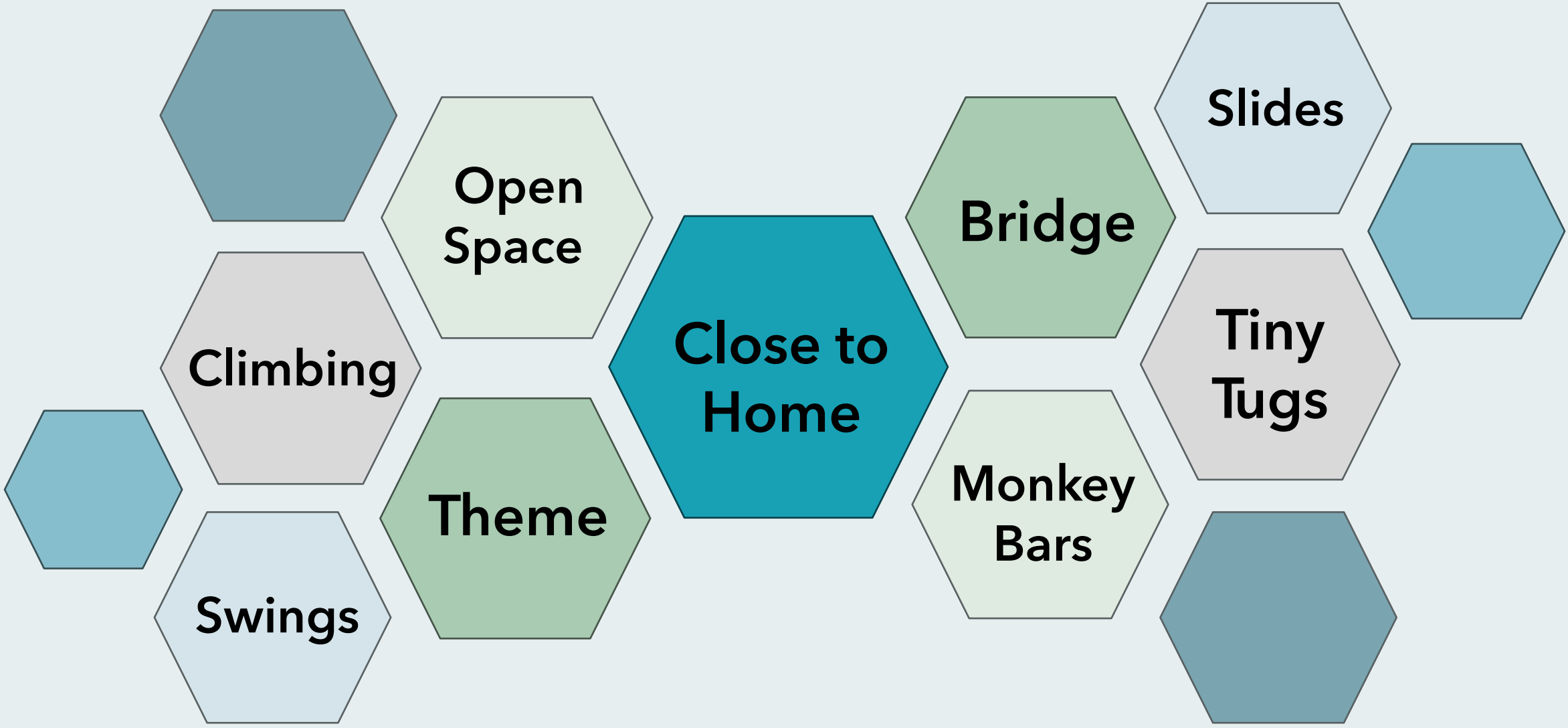
61%

*Note - Respondents could select more than one



Preferred Swing Types

What do you like most about the playground?





How important is a picnic/gathering space near the playground to you?

(Rank from 1-100%)



76%