

NOTICE OF WORKSHOP MEETING

Wednesday, March 9, 2022

Workshop Meeting

6:00 pm

Park District of Highland Park
Board of Park Commissioners
636 Ridge Road, Highland Park, IL 60035
[Live Stream Video Link](#)

WORKSHOP MEETING AGENDA

I. CALL TO ORDER

II. ROLL CALL

III. ADDITIONS TO THE AGENDA

IV. PUBLIC COMMENT FOR ITEMS ON AGENDA

For public comment, members of the public can attend the virtual meeting so they may have the opportunity to speak during the public comment period.

If you wish to speak during the virtual meeting, [click here to register](#).

Registrants will receive an email with meeting access information from it@pdhp.org.

Anyone wishing to speak during the public comment period of the virtual meeting will need to use the "Raise Hand" function in Zoom to indicate that they would like to speak. The Board President or Board Secretary will call on registrants who have activated the "Raise Hand" feature in alphabetical order.

V. PARK AVENUE SITE PLAN

VI. 2022 PARK AVENUE BOAT LAUNCH IMPROVEMENTS BID

VII. REVIEW OF VOUCHERS

VIII. OTHER BUSINESS

IX. OPEN TO PUBLIC TO ADDRESS BOARD

X. CLOSED SESSION PURSUANT TO THE FOLLOWING SECTIONS OF THE OPEN MEETINGS ACT:

Section 2(c)1: The employment, compensation, discipline, performance, or dismissal of specific employees, specific individuals who serve as independent contractors in a park, recreational, or educational setting, or specific volunteers of the public body or legal counsel for the public body; Section 2(c)5 – the purchase or lease of real estate including discussion on whether a certain parcel of property should be acquired; Section 2(c)6 – the setting of a price for sale or lease of property owned by the District; Section 2(c)8 – security procedures and the use of personnel and equipment to respond to an actual, a threatened, or a reasonably potential danger to the safety of employees, students, staff, the public, or public property; Section 2(c) 11 – litigation against or on behalf of the District or where the District finds that an action is probable or imminent; Section 2(c) 21 – the discussion of minutes lawfully closed under the Act, whether for the purposes of approval of said minutes or for conducting the semi-annual review of the minutes as set forth in section 2.06 of the Act.; Section 2(c) 29 - for discussions between internal or external auditors and the Board. Possible action by the Board on items discussed in closed session.

XI. ADJOURNMENT

Persons with disabilities requiring reasonable accommodation to participate in this meeting should contact the Park District's ADA Compliance Officer, Brian Romes, at the Park District's Administrative Office, 636 Ridge Road, Highland Park, IL Monday through Friday from 8:30 a.m. until 5:00 p.m. at least 48 hours prior to the meeting. Requests for a qualified ASL interpreter require five (5) working days advance notice. Telephone number 847-831-3810; fax number 847-831-0818.



Memorandum

To: Park Board of Commissioners

From: Amalia Schwartz, Planning and Projects Manager; Jeff Smith, Director of Planning and Projects; Brian Romes, Executive Director

Date: March 9, 2022

Subject: **Park Avenue Site Plan**

Summary

The Park Avenue Site Plan is an initiative from the Lakefront Master Plan Update that consolidates the various lakefront planning efforts to develop a holistic, sustainable, conceptual site plan for Park Avenue Beach and Boating Facility. The plan considers access, boat storage and amenities, passive and active recreation, infrastructure repair and replacement and is also consistent with the District's Beach Management Plan. The Site Plan includes Concept Plan Drawings, but does not include specific engineering, architectural, or construction plans. Concept Plan Drawings provide the Park District support to apply for grant funds and budget for future projects.

The Park Avenue Concept Plan Drawings were presented to the Park Board at the August 10 Workshop for board discussion. They were also shared with the public at a community meeting on August 16 where over 90 people attended to provide feedback. The Lakota Group presented the Preferred Concept Plan Drawings, as well as a summary of community feedback, at the Lakefront Committee on August 17. The Preferred Concept Plan Drawings were approved by the Park Board on August 24, 2021.

Phase 1 of the Preferred Concept Plan Drawings were submitted to IDNR for consideration of an OSLAD grant award.

Though the Concept Plan Drawings were approved, Lakota Group continued to work on the Summary Plan Document which details in a report format the process and the elements of the plan. The Summary Plan is complete and staff will briefly review the plan document.

Staff plan to recommend approval of the Park Avenue Site Plan at the March 30 Regular Board meeting.

PARK AVENUE BEACH & BOATING FACILITY

Master Plan Report

Highland Park, Illinois



PARK DISTRICT
of HIGHLAND PARK

THE
LAKOTA
GROUP.

1/10/2022



Table of Contents

Introduction	4
Site Context & Conditions “State of the Beach”	6
North Area	7
South Area	10
Map 1: North and South Area Character	11
Map 2: Access and Circulation	15
Potential Enhancements	17
Engagement	18
Stakeholder Input	19
Community Feedback	20
Preferred Site Plan	21
Preliminary Plan Elements and Site Features	22
Map 3: Preferred Plan - Full Concept	23
Phasing and Order of Magnitude Budgeting	26
Map 4: Preferred Plan - Phase One	27
Map 5: Preferred Plan - Phase Two	28
Implementation	30
Program and Site Improvement Matrix	31
Next Steps	34
Appendix	35
Cost Opinion - Phase One (1-3yrs)	36
Cost Opinion - Phase Two (4-6yrs)	37
Cost Opinion - Phase Three (7-10yrs)	38

INTRODUCTION

Highland Park's Park Avenue Beach and Boating Facility consists of property along the Lake Michigan shoreline, divided into two distinct areas. The north area of the park offers a passive, non-swimming beach, parking, boat storage, and limited leisure amenities, such as a picnic table. The south area includes the North Shore Yacht Club, boat launch, parking, boating beach, and storage sheds/areas. In late 2020, the Park District of Highland Park (PDHP) developed an update to their Lakefront Master Plan to reassess conditions and provide a path forward for each of the four lakefront parks. Two key recommendations were made for the Park Avenue Beach and Boating Facility. First, a Park Avenue Working Group (PAWG) was established to help direct options for improving long-term access to

boating and related activities. Second, it was recommended that a more detailed site plan be developed to address the key issues facing the site, including:

- Improvements to the yacht club building
- Enhancements for non-motorized boaters
- Enhancements to the pedestrian connections to and through the park

To address the second recommendation, in early February of 2021, PDHP engaged the Lakota Group, planners and landscape architects, to focus on developing a range of site plan options that tested optimized use of the park and beach to serve all users of this lakefront asset. These were to be based on direction from staff and Board, with input from PAWG and the City of Highland Park.

This study builds upon other current and previous studies such as

- 2007 Highland Park Lakefront Plan
- 2018 PDHP Community Input Surveys
- Beach Management Strategy Plan
- SmithGroup Breakwater Replacement Study
- Capital Improvement Plan

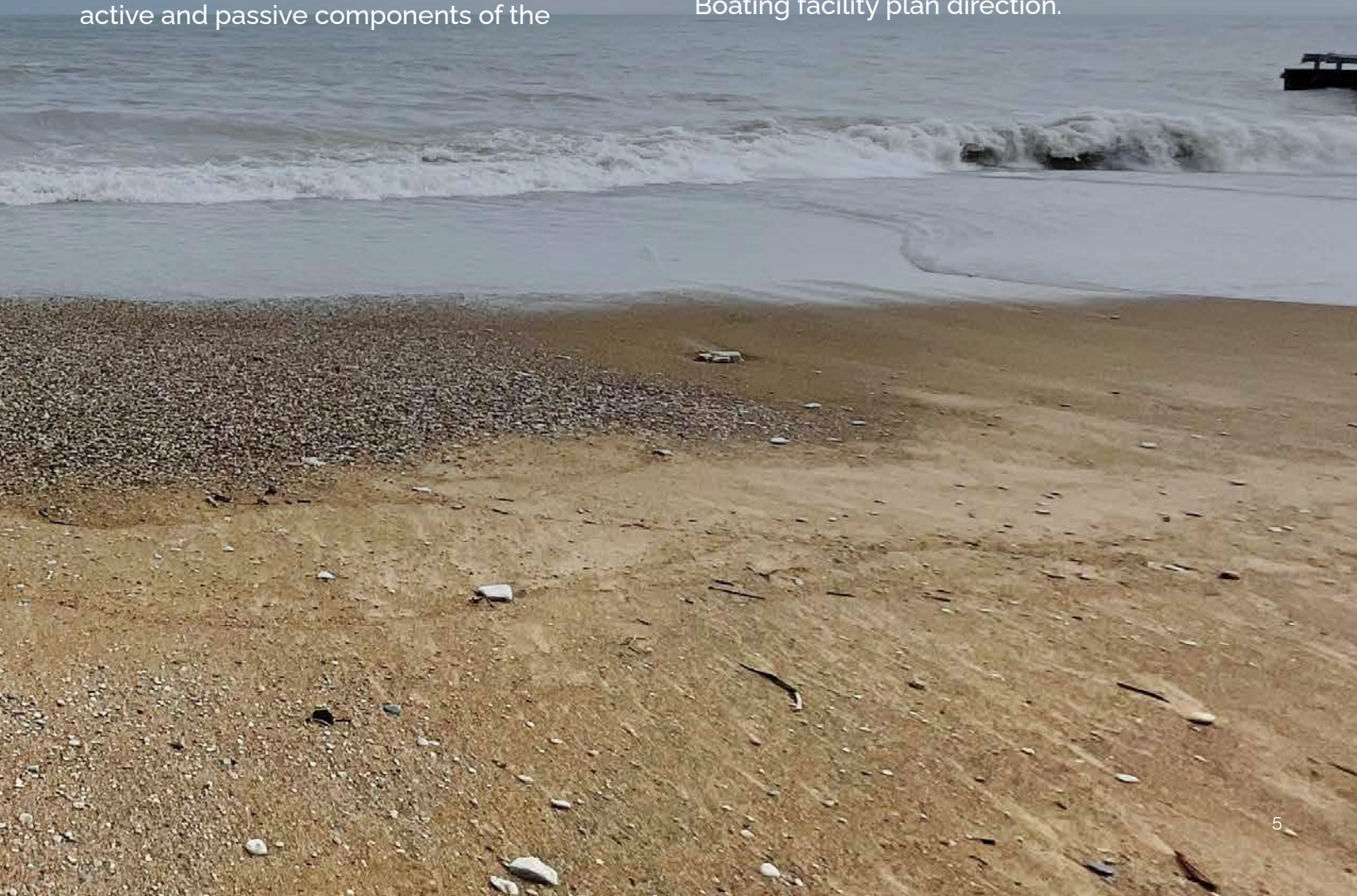
In addition to previous studies and input, this more focused site planning initiative engaged the voice of additional focused users such as the North Shore Yacht Club, neighbors and City of Highland Park leadership.

This summary report presents a preliminary site plan direction that highlights numerous active and passive components of the

plan to serve all members of the Highland Park community. In addition to needed infrastructure improvements that address, visual and physical access to the lakefront, the plan seeks to balance parking and boat storage facilities along with improved open space and pedestrian amenities.

This report also outlines a strategy for phase implementation, funding and management/programming of the plan components that will be folded into the district's long-range capital plan.

The following sections of this summary report outline the planning process and more specifically describe the details and strategies for implementing the Park Avenue Beach and Boating facility plan direction.



SITE CONTEXT & CONDITIONS "STATE OF THE BEACH"



NORTH AREA

Park District Parking Lot, Boat Storage, and Beach

The following observations and thoughts were developed by our team from several site visits with staff, committee members, and internal team visits.

- Arrival sequence for residents by car or foot from Park Avenue provides great views, but lacks coherent connectivity to the Boating Beach and Yacht Club
- There is a concrete path along Park Avenue, but the pedestrian connections at the bottom of the bluff are unclear and do not identify use areas of the beach
- There are little to no accommodations for pedestrians or seniors with regard to seating or overlooks
- The parking lot footprint is large, relative to the size of the beach, and seems unorganized. Views to Lake Michigan, one of the City's most important assets, is dominated by this parking lot, diminishing the appeal of this natural feature
- Snow storage limits parking lot usage in the winter months. Alternative snow management and/or storage location could extend use of the parking lot during the off-season and reduce potential snow melt run-off contamination, litter or debris.
- The gated boat storage area is functional and provides parking for approximately 34 boats, but overall, this area is unattractive and its orientation limits the use of the actual beach
- The chain link fence for the boat storage area immediately abuts the beach without screening or buffering; it appears the fence/sheet pile wall north of the boat storage could be moved further north
- The shoreline slope and sand on the beach directly east of the parking lot has eroded in some areas and below-grade protection fabric and stabilizing stones have migrated causing an unsightly and potentially hazardous condition
- The additional PDHP storage area immediately adjacent to the City's one-story storage building seems inefficient and its appearance detracts from the beach and natural feel of the park. Furthermore, it disconnects the only beachfront pedestrian link to the sailing beach and the parking and access drive west of the water plant
- Overall, the park is missing a sense of the beach environment, vegetation, and waterfront celebration



TOP: View of north beach showing exposed protection fabric and migrated shoreline stabilization stones impacting beach area.

BOTTOM RIGHT: North corner of boat storage area, looking south showing poor chain-link fence and vegetation conditions.

BOTTOM LEFT: View of degraded environmental conditions at north beach storage area.



POTENTIAL ENHANCEMENT CONCEPTS

- Explore vehicular and pedestrian reconfiguration options for arrival, parking, and boat storage
- Consider clear and effective signage, including wayfinding and potential gateways
- Test a better pedestrian arrival path and sequence to the beach that ultimately connects to the south on the lake side and provides ADA access throughout the site
- Explore alternate locations for secondary motorized or non-motorized boat storage or options for improving its relationship to the beach
- Consider decreasing impermeable surface, and/or using permeable pavers, and strategically adding native landscape
- Reassess the vegetation and potential incorporation of native species
- Consider a community-driven experience that plays to all demographics through a potential boardwalk, native vegetation stands, seating and overlook opportunities, and improved lighting and shelter opportunities
- Maximize the community's use and potential of the beach through increased programming, strategic partnerships, and potential revenue sharing opportunities

SOUTH AREA

North Shore Yacht Club, Boat Launch, Vehicle/Trailer Parking, and Beach

North Shore Yacht Club

The following observations and thoughts were developed by The Lakota Group team from several site visits with Park District staff, committee members, and internal team visits.

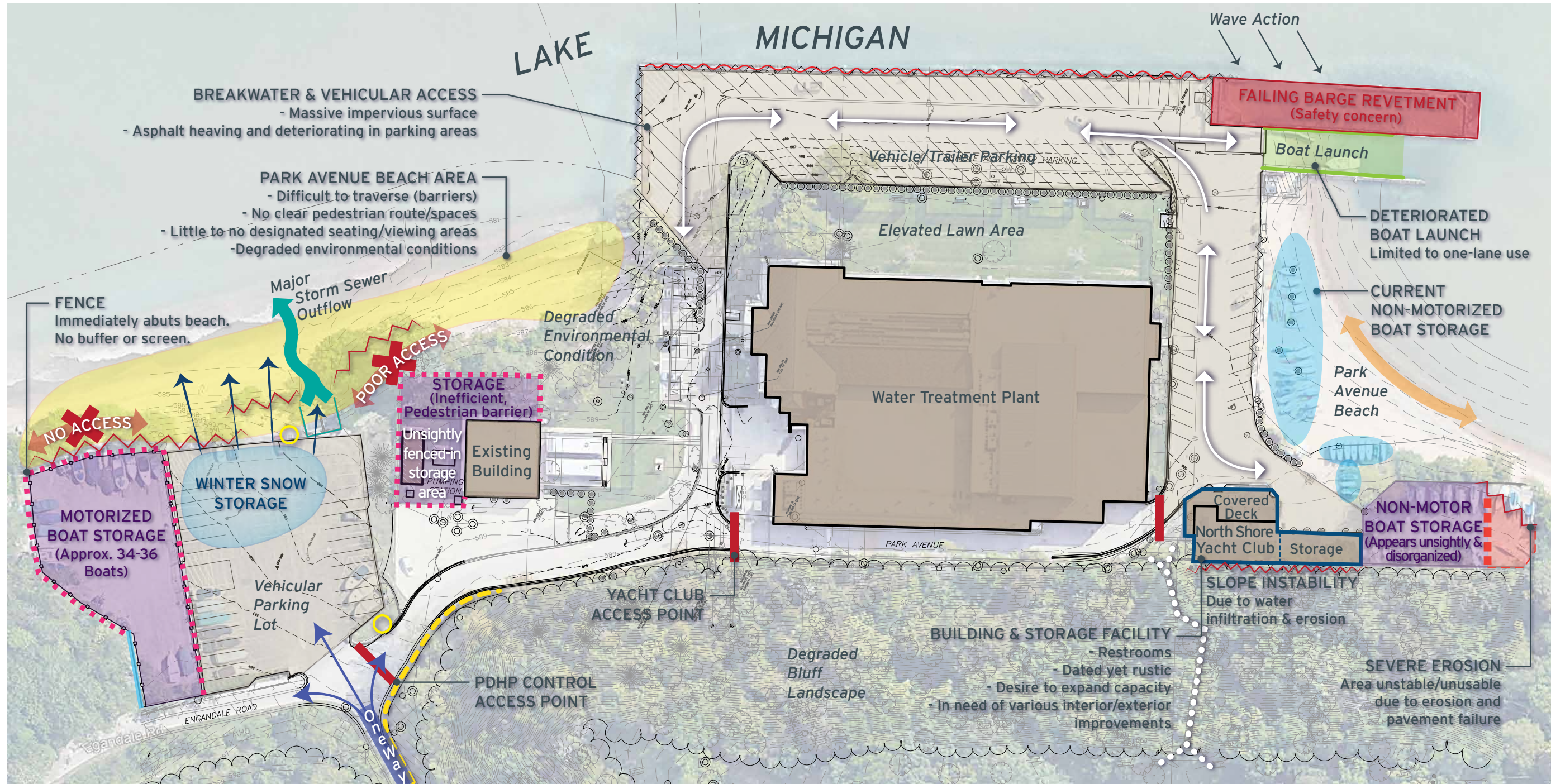
- Building is owned by the Park District and leased to the North Shore Yacht Club
- Overall, the building is structurally sound and generally suits the needs of the Club's current membership. The building is also rented out for small parties/events to non-members by the Park District
- The dated appearance and character of the building may be visually unappealing to the general public, however the sailors and boaters tend to like the rustic seaside character
- There is a desire by the Club to expand the capacity of the building from 65 to 130 people
- The building would benefit from architectural and material upgrades and repairs to improve its function as well as curb appeal, including:
- Potential interior improvements to consider include renovations to the kitchen and bathrooms, which are outdated, as well as increased storage. ADA improvements must be made as part of any upgrades



View of North Shore Yacht Club building, dated but with rustic seaside character.

- Exterior improvements to consider include repairs to the fascia/roof, front deck area, ADA access, new paint, new benches and seating, new exterior lighting, and addressing bluff issues behind the building
- Overly dense tree canopy on the bluff is contributing to slope instability. This combined with drainage issues has caused bluff erosion on the building's west side.

Map 1: Physical Conditions Analysis - North & South Area Character



LEGEND



- Clear Pedestrian Route

Removed Bluff Staircase

Access Control Gate
- Safety Guardrail
Deteriorating due to historic high wave action

Sheet Pile Wall
could move further north
- Chain-link Fencing

Erosion

Signage
- Stormwater Runoff

Water/Beach
Conflicts between personal water crafts, power boats, and unsanctioned swimmers due to limited space of cove/beach
- Slope Instability

Potential for Polluted Runoff

Yacht Club Access & Circulation

PARK AVENUE BEACH & BOATING FACILITY MASTER PLAN UPDATE

EXISTING CONDITIONS | NORTH & SOUTH AREA CHARACTER

HIGHLAND PARK, ILLINOIS

SCALE: 1"=70'
0' 17.5' 35' 70'

APRIL 15, 2021

PREPARED FOR:
PARK DISTRICT OF
HIGHLAND PARK

THE LAKOTA GROUP.
© 2021 THE LAKOTA GROUP



View from vehicle and trailer parking area looking north towards North Shore Yacht Club storage facility.

Storage Buildings and Service Areas

- The metal storage garages south of the yacht club appear to be well-used, but could be more efficiently organized
- It was noted that the storage racks for personal watercraft were inadequate
- The outdoor non-motorized storage/service areas appear disorganized and detract from the appeal of this portion of the beach
- There is severe slope instability/failure along the southeast edge of the non-motorized storage pad prohibiting full use of the storage area to the south
- The southern portion of the site, including the area between the water treatment plant and the lake, has an abundance of impermeable surface/paving that is disproportionate given the overall size of the site
- The vehicle and trailer parking area east of the water treatment plant is in fair condition; the pavement is heaving/deteriorating due to flooding, intense wave action, and historic high water levels
- The current storm system is also overtaxed due to these same volatile lake conditions

Boat Launch and Beach

- Over the course of this planning process the boat launch collapsed and is currently closed due to a failure in the concrete ramp. Due to previous deterioration, it had been operating with only one of the two lanes provided in service. Repair/replacement is being address through a separate project.
- SmithGroup presented numerous scenarios for rebuilding the lakefront breakwater to reestablish a new boat launch and more importantly protect the Park Avenue Boating Beach from further erosion. These planning efforts should seek a solution to maximize long-term value with total community benefit. Resolution of this issue is outside the scope of this study.
- Conflicts remain between personal watercraft and power boaters, primarily due to the small size of the cove/beach. In addition, the beach is a non-swimming beach, but still has swimmers utilizing the area which causes significant safety risks



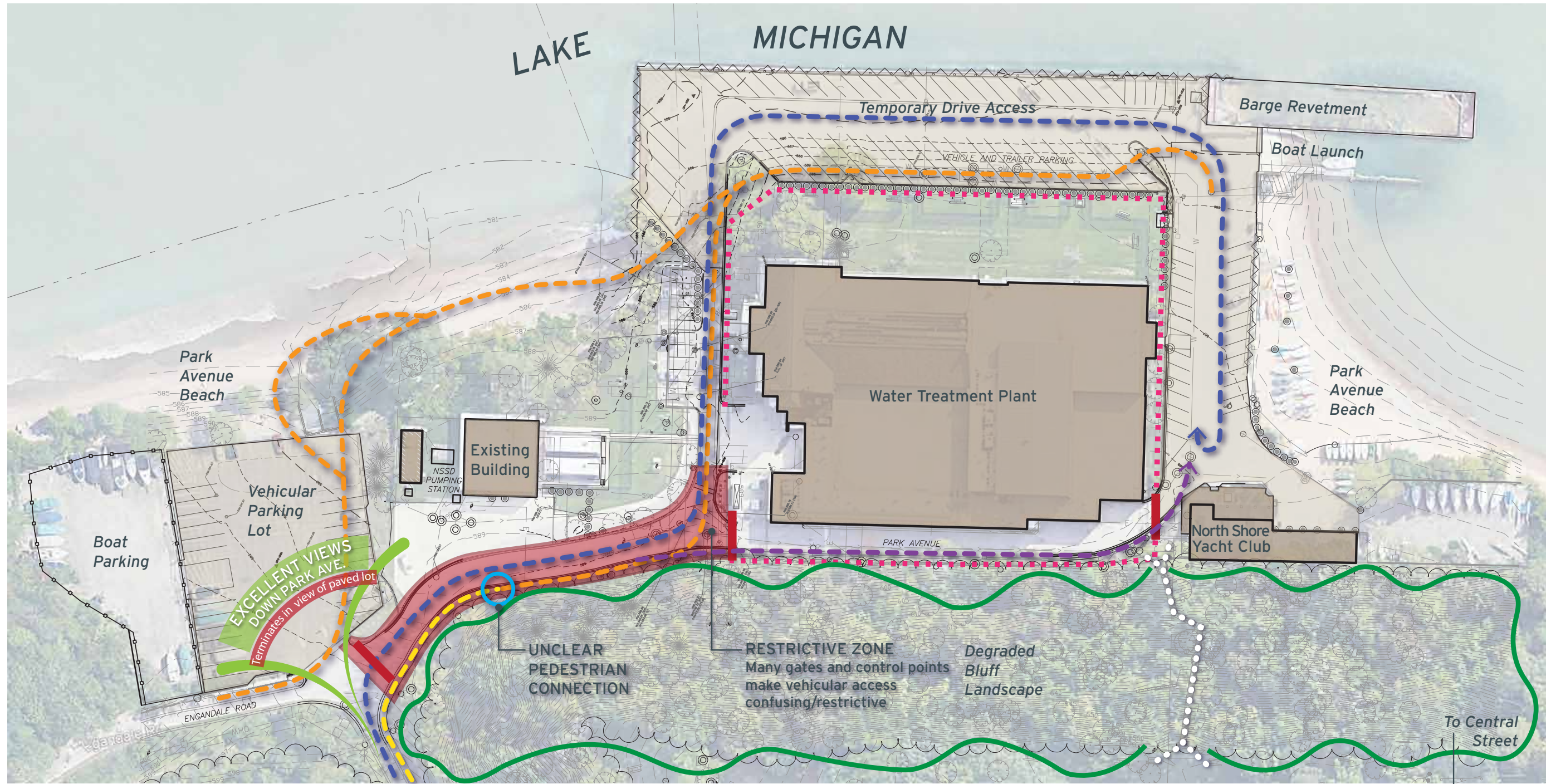
TOP: Existing boat launch conditions at south beach area.

BOTTOM: Pedestrian gate at Yacht Club building limits access.

Access and Circulation

- The deterioration and removal of the steps on the bluff has eliminated any pedestrian access directly from Central Park or Central Avenue. This access point provided residents direct access from the neighborhood and downtown. As a result, park visitors are finding unsanctioned paths through the bluff.
- The bluff has significantly eroded in some locations and a more active management plan for restoring the understory landscape and removing select canopy trees is needed to stabilize the slope and restore the quality of the bluff landscape ecosystem to support phase 3 improvements as noted later in this document. PDHP's Beach Management Plan details best management practices to address this issue.
- The fencing protocols which are needed and effective to manage the protected uses at the water treatment plant create the feeling of industrial isolation
- Parking in the neighborhood is an issue and creates conflicts between park users and neighbors
- The idea of a pedestrian pier/fishing pier has been discussed

Map 2: Physical Conditions Analysis - Access & Circulation



LEGEND

- - - - - Clear Pedestrian Route
- - - - - Defacto Pedestrian Circulation
- - - - - Vehicular Circulation
- - - - - Occasional Pedestrian Access
- Access Control Gate
- ~~~~~ Bluff
General bluff erosion.
Significant in various locations.
- - - - - Extensive Fencing
Creates feeling of Industrial Isolation
- Removed Bluff Staircase
Once accessible public access route
from park. Removal isolates Yacht
Club from neighborhood context.



PARK AVENUE BEACH & BOATING FACILITY MASTER PLAN UPDATE

EXISTING CONDITIONS | ACCESS & CIRCULATION

HIGHLAND PARK, ILLINOIS

SCALE: 1"=70'
0' 17.5' 35' 70' NORTH

APRIL 15, 2021

PREPARED FOR:
PARK DISTRICT OF
HIGHLAND PARK





Pedestrian and vehicular access to south beach and boat launch is limited by gates, control points, and environmental conditions.

POTENTIAL ENHANCEMENT CONCEPTS

- Explore new concepts for providing direct pedestrian access from Central Park/ Central Avenue to the southern portion of the site and the boating beach/yacht club
- Provide guidance and collaboration with other partners on potential solutions for beach/bluff improvements including governmental agencies such as the City, IDNR (CMP) & Lake County, any on-site user groups including the North Shore Yacht Club, and local groups/nonprofits such as Openlands, Chicago Wilderness, Friends of Lake Michigan, and Highland Park High School.
- Consider improved and more sustainable solutions to overall vehicular circulation and parking throughout the site as well as the amount of impermeable/paved surface
- Explore meaningful and cost-effective concepts for interior and exterior building improvements. Consider the idea of making the building a more community-centric facility
- Consider the improved function of the boat launch ramp and the cove beach in relation to the breakwater options
- Explore improved pedestrian access in and around the south beach areas
- Provide community-based amenities for non-boater residents such as seating, shelter(s), restrooms, signage, and lighting
- Maximize the community benefit of the south beach through improved programming, facilities, strategic partnerships, and revenue streams

ENGAGEMENT



STAKEHOLDER INPUT

In addition to discussions with PDHP staff, the Lakota team engaged various stakeholder groups including, PAWG, PDHP board members, city staff and interested citizens throughout the conceptual design development phase. The Park District also shared the plans with the North Shore Water Reclamation District. Through meaningful discussions with each group, we were able to develop targeted plan features and necessary design elements that align with multiple party's interests. Feedback from design review meetings were folded into each iteration to provide comprehensive, achievable solutions for the issues and opportunities identified in our site analysis phase. Some of the commentary we heard includes:

PDHP Staff

- Explore other alternatives for boat storage and parking, preferably on the South beach. Also consider off-site locations. Possibilities for restructuring annual/seasonal storage operations is open.
- Maximize public vehicular parking on the north end of the site. Maintain or improve on the existing spaces currently provided.
- Consider maximizing highly sought after vehicular parking spaces with lake views.

PDHP Board Members

- NSYC could consider creating a foundation to help offset improvements to the facility that they use and lease from the PDHP
- Beautify the aesthetics of the public beach component of the facility particularly on arrival. Very unattractive and not in keeping with other lakefront parks/beaches.

- Identify other revenue generating opportunities to this facility
- Focus dollars now on restoring the breakwater, boat launch and protecting beach
- Improve cooperation/collaboration with City engineering
- Balance the needs of the different boating groups. The sailing facilities are adequate. Need to recover costs of launch and storage improvements from the power boaters

PAWG / NSYC Members

- Maintain open access to the south beach cove for ease of operations and maintenance.
- Consider building efficiency investments at the North Shore Yacht Club building for lasting investment.
- Be aware of environmental considerations and cost to maintain boardwalk at south end of north beach area.

Highland Park City Staff

- Be aware of and maintain the stormwater overflow route along the south side of the north parking lot.
- Seasonal boat storage east of the water treatment plant is not ideal due to the high lake levels and unforgiving weather/storm events and complex circulation of the site.
- Confirmed pedestrian access is available west of the water treatment plant.

COMMUNITY FEEDBACK

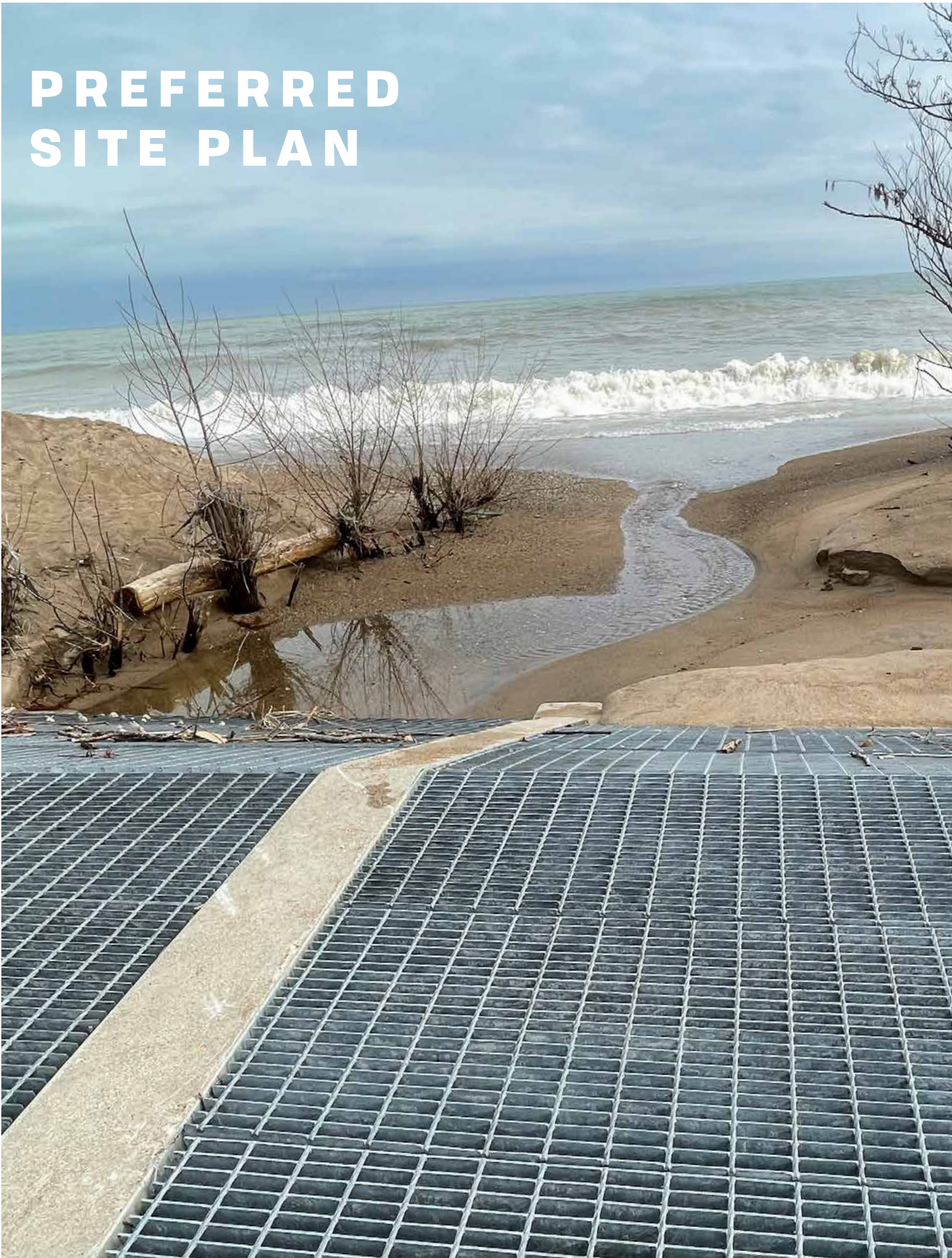
Community Open House Meeting

After many iterations of concept options Staff and the Lakota team identified two realistically achievable schemes. Both concepts provided the same recreational amenities, however, Option One expanded on vehicular parking spaces, while Option Two maximized boat storage. The team brought these two options to the community for feedback. Turnout for the meeting was significant with an estimated 90 people in attendance. The overall response ultimately favored concept Option Two. Below is a snapshot synopsis of community feedback and comments. It should be noted these comments reflect the perceptions and feelings of meeting attendees and at times these views conflict with the realities of facility operations.

COMMENTS & FEEDBACK

- Strong desire for swimming at the beach
- Interest in prioritizing boat storage at the site and maintaining/improving the fence
- Interest in seeing more revenue stream enhancements
- Consider fee structure for boat launch before allocating number of boat parking spaces as fees will effect usage.
- Opposition to increasing car/vehicular traffic to and at the site.
- Parking east of the water treatment plant is underutilized. Consider adding seating and viewing area(s).
- Consider widening sidewalk along Park Avenue. Need more separation from car traffic for pedestrian safety.
- Concerns about traffic conflicts at the painted ped-way. Consider ADA ramp/walk east of the water treatment plant.
- Interest in a bus/shuttle/ride-share service to/from the site.
- Interest in further improvements to Yacht Club building and enhanced interior boat storage.
- Concerns about impact to the bluff as it relates to the Phase 3 bluff staircase improvements shown on the plan.
- Concerns that a boardwalk could be undermined by shifting lake levels and ice movement.
- Desire to find new location for winter snow storage.

PREFERRED SITE PLAN



PRELIMINARY PLAN

Elements and Site Features

After exploring many alternate concepts, the Lakota team and PDHP staff arrived at a preferred concept which was shared with our stakeholder groups and further refined. The preliminary preferred plan emphasizes a community-driven experience that plays to all demographics through various design elements, native vegetation, and improved facilities and amenities.

PLAN FEATURES

- Improved sense of arrival and gateway experience for vehicles and pedestrians by emphasizing green space and views to lake
 - Entrance indicates clear and effective signage including wayfinding signage
 - Refined pedestrian arrival path and sequence to the beach is provided by through landscaped path along the south perimeter of the parking lot leading to a boardwalk feature that ultimately connects to the south beach, providing connectivity throughout the site.
 - Expanded and reconfigured parking lot provides an improved spatial relationship to the lakefront and accommodates 29 total proposed spaces, expanding slightly on the 28 spaces currently provided
 - Boat storage remains behind the fenced-in lot while striping in the lot is reconfigured to indicate 21 dedicated boat spaces.
- An additional 9 boat storage spaces are strategically provided along the perimeter and parking island to provide 30 total on-site spaces
- South storage lot reconfigured to allow for additional boat storage
 - Increases boat storage capacity for all watercraft types
 - Impervious surface has been decreased overall by providing a large parking island that functions as a bioswale for overland stormwater flows from large storm events
 - Improved access to Lakefront with a boardwalk, lit by bollards, and buffered by native vegetation, runs from the northeast corner of the parking lot to the south end of the beach.
 - Swimming is still prohibited at beaches per safety regulations

Map 3: Preferred Plan - Full Concept

MAP LEGEND

- A** Fenced Motorized Boat Storage
- B** Vehicular Parking
- C** Boat Launch Access Gate
- D** Inviting Entry with Bioswale
- E** Stormwater Outfall & Optional Bridge
- F** Boardwalk with Seating Nodes
- G** Enhanced Native Landscape
- H** Painted or Striped Pedway
- I** Relocated Storage
- J** Replace Breakwater & Boat Launch (Not in scope)
- K** Refurbished Deck & Landscape
- L** Applied Paving Treatment at 'Active Use' zone
- M** Reconfigured Drive
- N** Repaired Asphalt Pad
- O** Formalized Storage on Beach
- P** Entry Plaza with Pergola, Deck & Seating
- Q** Extended Boardwalk and Enhanced Views to Lake Michigan
- R** Picnic Areas
- S** Potential Future Pedestrian Access (PHASE 3 Long-term project)
- Site Lighting
- ✱ Signage Opportunity
- Designated Fishing area with Protective Guardrail

EXISTING PARKING METRICS

	CAR	BOAT	PWC	SAIL	NSYC	SUP
MAIN LOT	28	10	0	0	0	0
FENCED LOT	0	19	5	0	0	0
SOUTH PAD	0	0	0	10	3	8
INDOOR	0	0	0	0	0	14
DAILY	0	20	0	0	0	0
EAST/SOUTH LOT	37	0	0	0	0	0
TOTAL	65	49	5	10	3	22

PROPOSED PARKING METRICS

	CAR	BOAT	PWC	SAIL	NSYC	SUP
MAIN LOT	29	9	0	0	0	0
FENCED LOT	0	21	0	0	0	0
SOUTH PAD	0	0	6	12	3	24
INDOOR	0	0	0	0	0	14
DAILY	0	20	0	0	0	0
EAST/SOUTH LOT	37	0	0	0	0	0
TOTAL	66	50	6	12	3	38
DIFFERENCE	1	1	1	2	0	16





PLAN FEATURES, CONTINUED

- The north portion of the boardwalk runs adjacent to the parking lot and offers enhanced beach and landscape areas that address erosion issues with outcropping stone, providing seating areas with enhanced views to Lake Michigan
- The south end of the boardwalk is strategically curved to provide a dynamic walking experience and protect from severe storm and high-water events.
- A bridge feature allows access over the existing stormwater outfall and connects the south and north ends of the boardwalk to an entrance plaza with contemporary pergola, outlook deck, and group seating opportunities
- Direct pedestrian access is provided from the north beach to the south by two painted pedestrian routes on either side of the water treatment plant. These highly visible pedways delineate a safe pedestrian connection to the south beach
- Designated fishing areas featuring protective guardrails are proposed along the north and southeast edges of the seawall maximizing recreational opportunities for non-boating residents
- Sustainable, achievable proposed solutions to improve pedestrian/vehicular circulation at the south beach yacht club building are accomplished by re-aligning the access drive to the south parking pad and applying paving treatment to highlight “active use” zone near the yacht club facilities
- Restore full functionality of the south parking storage pad and reconfigure to maximize storage
- Meaningful and cost-effective interior and exterior building improvements for the North Shore Yacht Club facility. Proposed improvements include a refurbished deck with ADA access to the facility and improved landscape on the exterior, as well as interior building improvements to maximize usable space while improving building efficiency
- The proposed design accounts for replacement of the breakwater and boat launch facilities. Replacement of these features allows for comprehensive use of the south beach allowing for space to expand formal boat storage with added racks ultimately cleaning up the beach and improving operations and maintenance
- The plan suggests future proposed pedestrian stair connecting Central Park to Park Avenue's south beach. Planning for this capital improvement will be one of the most impactful ways to maximize the community's use of the Park Avenue Beach and Boating Facility asset. Any necessary bluff slope stabilization and restoration work are to coincide with the phase three pedestrian stair improvements

PHASING

& Order of Magnitude Budgeting

Further study went into prioritizing improvements in strategic phases. This approach addresses immediate needs for repairs and necessary improvements while maximizing recreational components. Costs are provided to reflect this comprehensive phased approach (see appendix).

Phase 1 | North Beach Improvements

- Reconfigured south end of the parking lot expands current vehicular parking space by one while providing an improved sense of arrival and gateway experience for both vehicular and pedestrian visitors through increased green space.
- Entrance indicates clear and effective signage including wayfinding signage and gateways
- A better pedestrian arrival path and sequence to the beach is provided by way of a landscaped path along the south perimeter of the parking lot, leading to a boardwalk feature that ultimately connects to the south beach on the lake side, providing connectivity throughout the site.
- Impervious surface has been decreased overall by providing a large parking island that functions as a bioswale for overland stormwater flows from large storm events.



View of Park Avenue Beach entrance island and signage.

- Boat storage within the fenced-in lot is maintained while offering some additional storage spaces integral to the parking lot, strategically provided along the perimeter and central parking island to provide 30 total on-site spaces.
- Improvements along the lakefront include an extensive boardwalk feature buffered by native vegetation, running from the southeast corner of the parking lot to the south end of the beach as it abuts the water treatment plant parking area.
- Direct pedestrian access is provided from the north beach to the south by way of two painted pedestrian routes on either side of the water treatment plant. These highly visible ped-ways delineate a safe pedestrian connection to the south beach

Map 4: Preferred Plan - Phase One

MAP LEGEND

- A** Fenced Motorized Boat Storage
- B** Vehicular Parking
- C** Boat Launch Access Gate
- D** Inviting Entry with Bioswale
- E** Enhanced Native Landscape
- F** Boardwalk with Seating Nodes
- G** Relocated Storage
- H** Replace Breakwater & Boat Launch (Not in scope)
- I** Applied Paving Treatment at 'Active Use' zone
- J** Reconfigured Drive
- K** Repaired Asphalt Pad
- Signage Opportunity
- Designated Fishing area with Protective Guardrail

EXISTING PARKING METRICS


	CAR	BOAT	PWC	SAIL	NSYC	SUP
MAIN LOT	28	10	0	0	0	0
FENCED LOT	0	19	5	0	0	0
SOUTH PAD	0	0	0	10	3	8
INDOOR	0	0	0	0	0	14
DAILY	0	20	0	0	0	0
EAST/SOUTH LOT	37	0	0	0	0	0
TOTAL	65	49	5	10	3	22

PROPOSED PARKING METRICS

	CAR	BOAT	PWC	SAIL	NSYC	SUP
MAIN LOT	29	9	0	0	0	0
FENCED LOT	0	19	5	0	0	0
SOUTH PAD	0	0	6	12	3	24
INDOOR	0	0	0	0	0	14
DAILY	0	20	0	0	0	0
EAST/SOUTH LOT	37	0	0	0	0	0
TOTAL	66	48	11	12	3	38
DIFFERENCE	1	-1	6	2	0	16



MAP LEGEND

- A** Fenced Motorized Boat Storage
- B** Picnic Areas
- C** Extended Boardwalk and Enhanced Views to Lake Michigan
- D** Entry Plaza with Pergola, Deck & Seating
- E** Stormwater Outfall & Optional Bridge
- F** Painted or Striped Pedway
- G** Refurbished Deck & Landscape
- H** Formalized Storage on Beach
-  Signage Opportunity

EXISTING PARKING METRICS

	CAR	BOAT	PWC	SAIL	NSYC	SUP
MAIN LOT	28	10	0	0	0	0
FENCED LOT	0	19	5	0	0	0
SOUTH PAD	0	0	0	10	3	8
INDOOR	0	0	0	0	0	14
DAILY	0	20	0	0	0	0
EAST/SOUTH LOT	37	0	0	0	0	0
TOTAL	65	49	5	10	3	22

PROPOSED PARKING METRICS

	CAR	BOAT	PWC	SAIL	NSYC	SUP
MAIN LOT	29	9	0	0	0	0
FENCED LOT	0	21	0	0	0	0
SOUTH PAD	0	0	6	12	3	24
INDOOR	0	0	0	0	0	14
DAILY	0	20	0	0	0	0
EAST/SOUTH LOT	37	0	0	0	0	0
TOTAL	66	50	6	12	3	38
DIFFERENCE	1	1	1	2	0	16



Phase 1 | South Beach Improvements

- Designated fishing areas featuring protective guardrails proposed maximize recreational opportunities for non-boating residents
- Sustainable, achievable proposed solutions to improve pedestrian/vehicular circulation at the south beach yacht club building are accomplished by re-aligning the access drive to the south parking pad and applying paving treatment to highlight “active use” zone near the yacht club facilities.
- Function of the south parking storage pad is restored with proposed repaired to the failed portion and re-organization that maximizes effective use of the renewed space.
- The proposed design accounts for repair of the breakwater and boat launch facilities

Phase 2 | North Beach Improvements

- Reconfigured north end of the parking lot maximizes highly sought-after vehicular parking spaces facing Lake Michigan and provides 40 total proposed spaces, expanding on the 29 provided in phase one.
- Boat storage and its relationship to the beach has been improved by removing the fenced-in lot and softening the overall aesthetic of the parking lot. Boat storage spaces are integral to the parking lot, strategically provided along the perimeter and central parking island to provide 21 total on-site spaces.
- Alternate locations for secondary motorized storage options were considered and are now proposed at the south storage lot and Central Park parking lot. The new locations combined provide the same number of storage spaces currently offered.

- Adjacent to the phase 2 parking lot expansion is a proposed boardwalk extension, offering enhanced beach and landscape areas that address erosion issues with outcropping stone, providing seating nodes with enhanced views to Lake Michigan.
- A bridge feature allows access over the existing stormwater outfall and connects the south and north ends of the boardwalk to an entrance plaza with contemporary pergola, outlook deck, and group seating opportunities

Phase 2 | South Beach Improvements

- Meaningful and cost-effective interior and exterior building improvements are suggested for the North Shore Yacht Club facility. Proposed improvements include a refurbished deck with ADA access to the facility, improved landscape on the exterior, as well as interior building improvements to maximize usable space while improving functionality and building efficiency.
- Expand formal boat storage with added racks on the beach ultimately cleaning up the beach and improving operations and maintenance

Phase 3 | Improvements

- Future proposed pedestrian stair access down the bluff from Central Park to Park Avenue's south beach. Planning for this capital improvement will be one of the most impactful ways to maximize the community's use of the Park Avenue Beach and Boating Facility asset.
- Necessary bluff slope stabilization and restoration work are to coincide with the pedestrian stair improvements and is accounted for in phase three budget costs (see appendix)

IMPLEMENTATION

Priorities, Schedule, Funding

The following matrices identify the specific phases, tasks, responsibilities, budgets, and funding sources to support the implementation of the plan over the next 10 years.

These implementation matrices assume the immediate need to address the rehabilitation or rebuilding of the breakwater and boat ramp facility. Actual timing and sequencing of any of the master plan projects will be coordinated with the needs of this larger infrastructure project.

Phase 1 initiatives focus on easily achievable target initiatives and support for more immediate repair, upkeep, safety, accessibility and environmental quality needs. A more definitive timeline for specific strategies noted below will be developed by PDHP staff as board approves and directs annual capital funding or aligns with other synergistic catalytic projects.

Funding

Anticipated funding strategies in addition to annual PDHP capital budget may include grant or targeting donor funding including but not limited to:

- Open space Land Acquisition and Development (OSLAD)
- Park and Recreational Facility Construction (PARC)
- Federal Recreational Trail Program
- Illinois Transportation Enhancement Program (ITEP)
- Illinois Department of Natural Resources - Sustainable Shoreline Grants
- Great Lakes Restoration Initiative - Joint venture habitat restoration and protection
- Land and Water Conservation Fund

**Program & Site
Improvements
Matrix**

Park Avenue Beach & Boating Facility		
Phase 1 (Year 1 - 3)	Phase 2 (Year 4 - 6)	Phase 3 (Year 7 - 10)
North beach parking expansion/reconfiguration		
Parking lot landscape enhancements		
Pedestrian walk connections		
Boardwalk promenade		
Dune landscape restoration		
Designated fishing areas		
Applied paving treatment		
South beach boat storage pad repair		
Breakwater restoration & boat launch repair		
	North beach boat storage lot resurfacing/ re-striping	
	Boardwalk promenade extension	
	Picnic areas	
	Entrance plaza outlook and shade structure	
	Stormwater outfall bridge	
	Site furnishing program	
	Site lighting program	
	Colored pedestrian routes	
	Yacht club interior building improvements	
	Yacht club exterior deck improvements	
	Yacht club landscape enhancements	
	Paddle board & kayak racks	
		Bluff ramp/stair access and overlook

Program & Site Improvements Matrix

0 - \$250,000 \$\$\$\$\$
 \$250,000 - \$500,000 \$\$\$\$\$
 \$500,000 - \$1,000,000 \$\$\$\$\$
 \$1,000,000 - \$2,000,000 \$\$\$\$\$
 \$2,000,000 + \$\$\$\$\$

Phase	Supports plan goals?		Cost (construction, soft costs)
Park Avenue Beach & Boating Facility			
1	✓	North beach parking expansion/reconfiguration	\$\$\$\$\$
1	✓	Parking lot landscape enhancements	\$\$\$\$\$
1	✓	Pedestrian walk connections	\$\$\$\$\$
1	✓	Boardwalk promenade	\$\$\$\$\$
1	✓	Dune landscape restoration	\$\$\$\$\$
1	✓	Designated fishing areas	\$\$\$\$\$
1	✓	Specialty applied paving treatment (ie. decorative thermoplastic applied and/or stamped asphalt treatment)	\$\$\$\$\$
1	✓	South beach boat storage pad repair	\$\$\$\$\$
1	✓	Breakwater restoration & boat launch repair	\$\$\$\$\$
2	✓	North beach boat storage lot resurfacing/re-striping	\$\$\$\$\$
2	✓	Boardwalk promenade extension	\$\$\$\$\$
2	✓	Picnic areas	\$\$\$\$\$
2	✓	Entrance plaza outlook and shade structure	\$\$\$\$\$
2	✓	Stormwater outfall bridge	\$\$\$\$\$
2	✓	Site furnishing program	\$\$\$\$\$
2	✓	Site lighting program	\$\$\$\$\$
2	✓	Colored pedestrian routes	\$\$\$\$\$
2	✓	Yacht club interior building improvements	\$\$\$\$\$
2	✓	Yacht club exterior deck improvements	\$\$\$\$\$
2	✓	Yacht club landscape enhancements	\$\$\$\$\$
2	✓	Paddle board & kayak racks	\$\$\$\$\$
3	✓	Bluff ramp/stair access and overlook	\$\$\$\$\$

Funding Source Grant opportunity?	Revenue generator?	Notes
✓	✓	OSLAD*
✓		OSLAD*
✓		OSLAD*
✓		Restoration projects may be eligible for Great Lakes Restoration Initiative grants (USEPA), National Fish and Wildlife Foundation grants, US Fish and Wildlife grants, Great Lakes Fishery and Ecosystem Restoration (GLFER) Program
✓		OSLAD*
	✓	
	✓	
	✓	
✓		OSLAD*
✓		OSLAD*
✓		OSLAD*
✓		OSLAD*
✓	✓	OSLAD*
✓	✓	OSLAD*
✓		OSLAD*
✓	✓	OSLAD*

*Grant source funded by State of Illinois

NEXT STEPS

What's next?

- PARK BOARD APPROVED THE PREFERRED CONCEPT PLAN ON AUGUST 23 2021
- PRESENT MASTER PLAN REPORT TO THE PARK BOARD OF COMMISSIONERS AND COMMUNITY
- IDENTIFY AND PURSUE FUNDING OPPORTUNITIES
- DETAILED DESIGN / ENGINEERING
- BIDDING/CONSTRUCTION

APPENDIX



Date: August 20, 2021
RE: Park Ave Boating Facility
Project #: 21003

Description	Estimated Quantity	Unit	Unit Cost	Extended Cost	Subtotal
Demolition					
Grubbing, plant removal	13,724	SF	\$ 0.75	\$ 10,293	
Remove existing pavement	7,682	SF	\$ 2.50	\$ 19,205	
Tree removal and stump grinding	9	EA	\$ 1,000	\$ 9,000	
Rough grading	8,363	SF	\$ 2	\$ 16,726	
Soil spoils removal	300	CY	\$ 60	\$ 18,000	
				Subtotal:	\$ 73,224
North Beach Improvements					
Asphalt Parking Grind/Resurface	13,951	SF	\$ 4.50	\$ 62,780	
Asphalt Parking New Surface	1,317	SF	\$ 5	\$ 6,585	
Pavement Markings	1	LUMP	\$ 5,000	\$ 5,000	
Concrete Curb	372	LF	\$ 35	\$ 13,020	
Depressed Curb at Bioswale	246	LF	\$ 35	\$ 8,610	
Concrete Walks	1,771	SF	\$ 15.75	\$ 27,893	
Boardwalk Promenade - Structure, Framing, Decking	2,307	SF	\$ 250	\$ 576,750	
Beach Landscape - Dune grasses, forbes, plugs	6,000	SF	\$ 3	\$ 18,000	
Beach Landscape Planting Bed Topsoil	167	CY	\$ 65	\$ 10,855	
Parking Lot/Perimeter Planting Bed Topsoil	120	CY	\$ 65	\$ 7,800	
Parking Lot/Perimeter Tree Planting Topsoil	150	CY	\$ 65	\$ 9,750	
Parking Lot/Perimeter Perennials/Ornamental Grasses	857	EA	\$ 20	\$ 17,140	
Parking Lot/Perimeter Shrub Plantings	82	EA	\$ 80	\$ 6,560	
Parking Lot Shade Trees (4" caliper)	4	EA	\$ 1,200	\$ 4,800	
Pavement Markings at Designated Fishing Areas	1	LUMP	\$ 2,000	\$ 2,000	
Guardrail at Designate Fishing Areas	143	LF	\$ 100	\$ 14,300	
Utilities (storm, electric, etc.)	1	LUMP	\$ 15,000	\$ 15,000	
Outdoor Furniture (NOT INCLUDED)	1	LUMP	\$ 6,000	\$ 6,000	
				Subtotal:	\$ 806,843
South Beach Improvements					
Asphalt Parking Grind/Resurface	6,185	SF	\$ 4.50	\$ 27,833	
Asphalt Parking New Surface	750	SF	\$ 5	\$ 3,750	
Pavement Markings at Specialty Use Zone	1	LUMP	\$ 2,000	\$ 2,000	
				Subtotal:	\$ 33,583
				Construction Cost Subtotal:	\$ 913,649
				Soft costs - 15% (A&E, FF&E, Permitting):	\$ 137,047
				15% Contingency:	\$ 137,047
				PHASE 1 TOTAL:	\$ 1,187,744

Notes:
Excludes any required drainage items including structures, piping, storage, etc.
Tree removals to be field verified

Date: August 20, 2021
RE: Park Ave Boating Facility
Project #: 21003

Description	Estimated Quantity	Unit	Unit Cost	Extended Cost	Subtotal
Demolition					
Grubbing, plant removal	3,727	SF	\$ 0.75	\$ 2,795	
Rough grading	5,316	SF	\$ 2	\$ 10,632	
				Subtotal:	\$ 13,427
North Beach Improvements					
Asphalt Parking Grind/Resurface at Boat Storage	19,160	SF	\$ 4.50	\$ 86,220	
Concrete Walks	1,997	SF	\$ 15.75	\$ 31,453	
Boardwalk Promenade - Structure, Framing, Decking	1,487	SF	\$ 250	\$ 371,750	
Stormwater Outfall Optional Bridge	1	LUMP	\$ 25,000	\$ 25,000	
Beach Landscape - Dune grasses, forbes, plugs	3,427	SF	\$ 3	\$ 10,281	
Beach Landscape Planting Bed Topsoil	100	CY	\$ 65	\$ 6,500	
Outcropping Stone	30	TON	\$ 650	\$ 19,500	
Promenade Shade Trees (4" caliper)	3	EA	\$ 1,200	\$ 3,600	
Pedestrian Lighting	2	EA	\$ 3,500	\$ 7,000	
Parking Lot Lighting	2	EA	\$ 7,000	\$ 14,000	
Utilities (storm, electric, etc.)	1	LUMP	\$ 10,000	\$ 10,000	
Outdoor Furniture	1	LUMP	\$ 50,000	\$ 50,000	
Asphalt New Surface at Ped Route (NOT INCLUDED)	2,954	SF	\$ 5		
Concrete Curb at Ped Route (NOT INCLUDED)	48	LF	\$ 35		
				Subtotal:	\$ 635,304
North Beach Structures and Elements					
New Pergola 12'x48' (no paint/finish)	1	EA	\$ 65,000	\$ 65,000	
				Subtotal:	\$ 65,000
Yacht Club Building Renovation					
Interior Building Improvements	1	LUMP	\$ 150,000	\$ 150,000	
FF&E Improvements	1	LUMP	\$ 100,000	\$ 100,000	
New Building Deck Improvements	1,345	SF	\$ 85	\$ 114,325	
Planting Bed Topsoil	2	CY	\$ 65	\$ 130	
Perennials/Ornamental Grasses	109	EA	\$ 18	\$ 1,962	
Utilities	1	LUMP	\$ 25,000	\$ 25,000	
				Subtotal:	\$ 391,417
South Beach Structures and Elements					
Pavement Markings at Colored Ped Route	1	LUMP	\$ 6,000	\$ 6,000	
Paddle Board/Kayak Racks	5	EA	\$ 3,000	\$ 15,000	
				Subtotal:	\$ 21,000
				Construction Cost Subtotal :	\$ 1,126,148
				Soft costs - 15% (A&E, FF&E, Permitting) :	\$ 168,922
				15% Contingency :	\$ 168,922

PHASE 2 TOTAL: \$ 1,463,992

Notes:
Excludes any required drainage items including structures, piping, storage, etc.
Tree removals to be field verified

Date: August 20, 2021
 RE: Park Ave Boating Facility
 Project #: 21003

Description	Estimated Quantity	Unit	Unit Cost	Extended Cost	Subtotal
-------------	--------------------	------	-----------	---------------	----------

Other Key Optional Components	RANGE OF COSTS					
	Low	to	High			
New Bluff Stairs/Ramp Feature	1	LUMP	\$ 1,600,000	\$ 1,600,000	-	\$ 2,100,000
Subtotal:			\$ 1,600,000	\$ 1,600,000		\$ 2,100,000

Notes:
 Excludes any required drainage items including structures, piping, storage, etc.
 Tree removals to be field verified



**THE
LAKOTA
GROUP.**

PARK AVENUE BEACH & BOATING FACILITY

Master Plan Report



Memorandum

To: Park Board of Commissioners

From: Jeff Smith, Director of Planning and Projects; Brian Romes, Executive Director

Date: March 9, 2022

Subject: **2022 Park Avenue Boat Launch Improvements Bid**

Summary

The Park District of Highland Park received six sealed bids on Wednesday, February 23, 2022, for materials and labor to complete the 2022 Park Avenue Boat Launch Improvements Project. The scope of this project includes removal of the existing barge breakwater and boat ramp, stockpiling and salvaging existing breakwater fill and armor stone, construction of a new steel sheet pile breakwater with a concrete crown wall, construction of a new concrete boat launch, furnishing and installing all site furniture including bollards, chains, floating docks and lighting, and associated items. If approved by the Park Board, construction is scheduled to begin September 6, 2022, and conclude by May 12, 2023. Staff will review the bid results (below), value engineering options, and next steps.

Company	Total Base Bid	TOTAL BID (With Alternates)
Lakes & Rivers Contracting	\$2,265,450.00	\$2,582,400.00
Rausch Infrastructure	\$2,434,000.00	\$2,694,560.00
John Keno & Company	\$2,685,302.00	\$2,925,662.00
Kovilic Construction Company	\$3,743,150.00	\$3,979,650.00
Michels Construction	\$4,009,382.53	\$4,392,664.88
Copenhaver Construction	\$4,186,505.00	\$4,621,705.00

The low bidder was Lakes and Rivers Contracting, Inc. This contractor has favorable references and extensive experience with this type of work.

Financial Impact

Capital Budgeted 2022	\$2,000,000
Donations	\$361,881
BADD Grant (If Awarded)	\$200,000
Lakes & Rivers Construction Bid	(\$2,582,400)
5% Contingency	(\$129,120)
SmithGroup Construction Phase Service	(\$68,510)
Anticipated Amount <u>Over</u> Budget	(\$218,149)



Memorandum

To: Board of Park Commissioners

From: Les Pauls -Temporary Accounts Payable Administrator
Mari-Lynn Peters - Finance Director
Brian Romes - Executive Director

Date: March 9, 2022

Subject: Bills presented for the Board's review on March 9, 2022.
Checks written February 19, 2022 to March 4, 2022.

BILLS

DATE

AMOUNT

March 3, 2022	\$	349,271.52
Void Payments	\$	-
Bank Drafts	\$	38,526.52
P-Card	\$	114,036.06
TOTAL	\$	501,834.10

PAYROLL DISBURSEMENTS

TOTAL	\$	-
--------------	-----------	----------

GRAND TOTAL	\$	501,834.10
--------------------	-----------	-------------------



Park District of Highland Park, IL

Check Register

Packet: APPKT03054 - 03/03/22 Check Print

By Check Number

Vendor Number	Vendor DBA Name	Payment Date	Payment Type	Discount Amount	Payment Amount	Number
Payable #	Payable Type	Payable Date	Payable Description	Discount Amount	Payable Amount	
Bank Code: AP-AP BANK						
15147	ABC PRINTING COMPANY	03/03/2022	Regular	0.00	3,239.94	187618
262735	Invoice	02/15/2022	Golf Club Brochure	0.00	394.24	
262739	Invoice	02/15/2022	Business Cards	0.00	132.26	
262790	Invoice	02/17/2022	Decals	0.00	2,713.44	
10034	ABSOLUTE HOME IMPROVEMENTS	03/03/2022	Regular	0.00	6,110.10	187619
#2	Invoice	12/31/2021	Sunset Woods Concrete/Masonry	0.00	1,340.10	
3	Invoice	12/31/2021	Sunset Woods Park General Construction	0.00	4,770.00	
16398	ADDISON GROUP	03/03/2022	Regular	0.00	1,165.50	187620
10363582	Invoice	02/12/2022	Temp for Finance Dept	0.00	1,165.50	
19724	AMERICAN TEST CENTER	03/03/2022	Regular	0.00	880.00	187621
2220343	Invoice	02/15/2022	1390 Sunset Road Safety Inspection	0.00	880.00	
19626	B. H. SUHR & COMPANY INC	03/03/2022	Regular	0.00	2,000.00	187622
1451	Invoice	11/10/2021	Moronay Park Boundary Survey	0.00	2,000.00	
19583	BRENDA MENDOZA ILLESCAS	03/03/2022	Regular	0.00	222.00	187623
022422	Invoice	02/24/2022	Basketball Official Jan 2022	0.00	222.00	
19563	BUILDERS PAVING, LLC	03/03/2022	Regular	0.00	30,082.78	187624
2105003	Invoice	12/31/2021	Golf Learning Center Parking Lot Imp	0.00	30,082.78	
10463	CHICAGO TRIBUNE	03/03/2022	Regular	0.00	217.72	187625
048619835000	Invoice	01/31/2021	Jan 2022 Classified Listing	0.00	217.72	
10502	CITY OF HIGHLAND PARK	03/03/2022	Regular	0.00	8.50	187626
030222 024593	Invoice	03/02/2022	1755 St Johns Ave 02/01/22-02/28/22	0.00	8.50	
19725	CLIFTON TURNER	03/03/2022	Regular	0.00	100.00	187627
022422	Invoice	02/24/2022	Girls Feeder Official Jan 2022	0.00	100.00	
10537	COMMONWEALTH EDISON COMPANY	03/03/2022	Regular	0.00	5,433.49	187628
021622 02032300...	Invoice	02/16/2022	1390 Sunset 01/18/22-02/16/22	0.00	2,107.53	
022322 18122640...	Invoice	02/23/2022	636 Ridge Rd 01/25/22-02/23/22	0.00	2,276.86	
022322 18147670...	Invoice	02/23/2022	1 N Park 01/25/22-02/23/22	0.00	172.94	
022422 72610440...	Invoice	02/24/2022	1240 Fredrickson Place 01/26/22-02/24/22	0.00	876.16	
10624	DANIEL CREANEY COMPANY	03/03/2022	Regular	0.00	1,340.00	187629
44589	Invoice	02/08/2022	January 2022 Moraine Park Path	0.00	1,340.00	
15485	DAVID MANNA	03/03/2022	Regular	0.00	111.00	187630
022422	Invoice	02/24/2022	Basketball Official Jan 2022	0.00	111.00	
18562	DAVIS BANCORP INC	03/03/2022	Regular	0.00	1,406.00	187631
102605	Invoice	02/28/2022	FEB 2022	0.00	1,406.00	
19586	DONALD LIEBENSON	03/03/2022	Regular	0.00	157.50	187632
022422	Invoice	02/24/2022	Environmental Management Park District Pa...	0.00	157.50	
10756	DRUE HOFFMAN	03/03/2022	Regular	0.00	37.00	187633
022422	Invoice	02/24/2022	Basketball Official Jan 2022	0.00	37.00	
17122	DYNEGY ENERGY SERVICES	03/03/2022	Regular	0.00	28,961.99	187634
331665722021	Invoice	02/28/2022	Electricity 01/25/22-02/22/22	0.00	28,961.99	
19727	EMILY RICE	03/03/2022	Regular	0.00	50.00	187635

Check Register

Vendor Number	Vendor DBA Name	Payment Date	Payment Type	Discount Amount	Payment Amount	Number
Payable #	Payable Type	Payable Date	Payable Description	Discount Amount	Payable Amount	
147861	Invoice	03/02/2022	REFUND	0.00	50.00	
17719	CONSTELLATION NEWENERGY - GAS D	03/03/2022	Regular	0.00	13,149.92	187636
3406074	Invoice	02/15/2022	1201 Park Ave W Jan 2022	0.00	3,419.74	
3406742	Invoice	02/15/2022	Jan 2022 1240 Fred,3100 Trail,636 Ridge	0.00	9,730.18	
19723	FRONTARRO RICE	03/03/2022	Regular	0.00	100.00	187637
022422	Invoice	02/24/2022	Girls Feeder Official Jan 2022	0.00	100.00	
10974	GEWALT HAMILTON ASSOCIATES INC	03/03/2022	Regular	0.00	5,135.90	187638
5121.250-12	Invoice	12/31/2021	SVGC Bridge Replacement 12/31/21	0.00	2,716.00	
5121.250-12-1	Invoice	02/15/2022	SVGC Bridge Replacement 01/30/22	0.00	2,419.90	
11121	HIGHLAND PARK STRINGS	03/03/2022	Regular	0.00	10,000.00	187639
022822	Invoice	02/28/2022	Sponsored Organization Stipend	0.00	10,000.00	
11192	ILLINOIS PUMP, INC.	03/03/2022	Regular	0.00	2,595.00	187640
S-14132	Invoice	12/09/2021	Cunniff Basin Pump Float Controls	0.00	2,595.00	
11274	JAY BACH	03/03/2022	Regular	0.00	148.00	187641
022422	Invoice	02/24/2022	Basketball Official Jan 2022	0.00	148.00	
16981	KONE	03/03/2022	Regular	0.00	2,550.84	187642
962104964	Invoice	01/01/2022	HPCC Maintenance 2022	0.00	2,550.84	
19677	LASALLE NETWORK	03/03/2022	Regular	0.00	1,925.01	187643
505865	Invoice	02/14/2022	Temp Emp Finance Dept	0.00	933.63	
506574	Invoice	02/21/2022	Finace Temp week ending 02/20/22	0.00	991.38	
18474	LAKESHORE RECYCLING SYSTEMS, LLC	03/03/2022	Regular	0.00	1,480.10	187644
0004912874	Invoice	02/28/2022	883 SHERIDAN RD	0.00	74.11	
0004912876	Invoice	02/28/2022	2821 RIDGE RD, MARCH 2/2022	0.00	74.11	
0004912877	Invoice	02/28/2022	701 DEER CREEK PKWY MARCH,2/2022	0.00	129.43	
0004912878	Invoice	03/02/2022	636 RIDGE RD MARCH,2/2022	0.00	194.69	
0004912879	Invoice	02/28/2022	3100 TRAIL WAY MARCH,2/2022	0.00	309.74	
0004912881	Invoice	02/28/2022	1240 Fredrickson PI 03/01/22-03/31/22	0.00	360.63	
0004913118	Invoice	02/28/2022	1201 PARK AVE W MARCH,2/2022	0.00	337.39	
17948	MAJESTIC OAKS NURSERY LLC	03/03/2022	Regular	0.00	32.00	187645
132993	Invoice	10/13/2021	2 Fall Shrubs	0.00	32.00	
19703	MARI-LYNN PETERS	03/03/2022	Regular	0.00	150.31	187646
020222	Invoice	02/22/2022	IPRA Membership	0.00	150.31	
19722	MARK DEVEREUX	03/03/2022	Regular	0.00	9.00	187647
022822	Invoice	02/28/2022	REFUND	0.00	9.00	
11805	MIKE CORRIGAN	03/03/2022	Regular	0.00	250.00	187648
022422	Invoice	02/24/2022	Basketball Official Jan 2022	0.00	250.00	
11809	MIKE FRAGIAS	03/03/2022	Regular	0.00	100.00	187649
022422	Invoice	02/24/2022	Basketball Official Jan 2022	0.00	100.00	
17710	MNJ TECHNOLOGIES DIRECT, INC	03/03/2022	Regular	0.00	776.29	187650
0003827946	Invoice	02/16/2022	3 year Premier Support	0.00	148.23	
0003829540	Invoice	02/25/2022	Logitech Webcam	0.00	128.94	
0003829541	Invoice	02/25/2022	Lenovo Think Vision	0.00	469.14	
0003829711	Invoice	02/25/2022	Axiom Display Port Cable	0.00	29.98	
11841	MORRIS SCHWARTZ	03/03/2022	Regular	0.00	250.00	187651
022422	Invoice	02/24/2022	Basketball Official Jan 2022	0.00	250.00	
10006	NCPERS GROUP LIFE INSURANCE	03/03/2022	Regular	0.00	80.00	187652
022422 NCPERS	Invoice	02/24/2022	02/24/22 NCPERS Group Life Insurance	0.00	80.00	
13604	NORTH SHORE GAS	03/03/2022	Regular	0.00	9,669.64	187653

Check Register

Vendor Number	Vendor DBA Name	Payment Date	Payment Type	Discount Amount	Payment Amount	Number
Payable #	Payable Type	Payable Date	Payable Description	Discount Amount	Payable Amount	
021622 06011450...	Invoice	02/16/2022	701 Deer Creek Pkwy 01/13/22-02/11/22	0.00	4,187.48	
021622 06011450...	Invoice	02/16/2022	1240 Frederickson 01/14/22-02/11/22	0.00	1,800.10	
021622 06011450...	Invoice	02/16/2022	1201 Park Ave W 01/15/22-02/14/22	0.00	2,718.24	
021622 060225773	Invoice	02/16/2022	1390 Sunset Road 01/14/22-02/11/22	0.00	59.30	
021622 06024054...	Invoice	02/16/2022	1240 Frederickson 01/14/22-02/11/22	0.00	314.56	
021622 06024054...	Invoice	02/16/2022	2900 Trailway 01/14/22-02/14/22	0.00	213.43	
021622 06024054...	Invoice	02/16/2022	701 Deer Creek Pkwy 01/14/22-02/11/22	0.00	197.73	
021622 06024054...	Invoice	02/16/2022	3100 Trailway 01/13/22-02/11/22	0.00	178.80	
14914	NORTH SHORE WATER RECLAMATION	03/03/2022	Regular	0.00	20.36	187654
4739452	Invoice	12/31/2021	0 Cavell Ave 07/15/21-10/18/21	0.00	10.18	
4740641	Invoice	12/31/2021	750 Lincoln Ave 07/15/21-10/18/21	0.00	10.18	
11962	NUTOYS LEISURE PRODUCTS	03/03/2022	Regular	0.00	4,830.00	187655
52550	Invoice	02/16/2022	5 Log Steppers	0.00	4,830.00	
11998	PARK DISTRICT RISK MGMT AGCY	03/03/2022	Regular	0.00	175,535.37	187656
0222133	Invoice	02/28/2022	Prop/Liab/WC/Emplmnt/Pollution	0.00	24,117.57	
0222133H	Invoice	02/28/2022	Monthly Health Premium Feb 2022	0.00	151,417.80	
16344	PARKS FOUNDATION OF HIGHLAND PA	03/03/2022	Regular	0.00	13,572.00	187657
022622	Invoice	02/26/2022	Reimburse Foundation for Funds Collected	0.00	13,572.00	
12184	REINDERS, INC.	03/03/2022	Regular	0.00	1,939.34	187658
4067483-00	Invoice	01/06/2022	Repair GM 4700 30882	0.00	1,939.34	
12211	RICOH USA, INC	03/03/2022	Regular	0.00	969.62	187659
5063922548	Invoice	02/17/2022	Copies 01/17/22-02/16/22	0.00	969.62	
16459	SANTO SPORT STORE	03/03/2022	Regular	0.00	18,719.75	187660
707348	Invoice	02/22/2022	198 Caps	0.00	2,920.50	
707374	Invoice	02/14/2022	132 Uniform Jerseys	0.00	2,777.00	
707415	Invoice	02/14/2022	205 Pants	0.00	3,047.00	
707416	Invoice	02/14/2022	Socks and Belts	0.00	914.25	
707452	Invoice	02/14/2022	228 Baseball Jerseys	0.00	8,601.00	
707689	Invoice	02/14/2022	115 Uniform Packing	0.00	460.00	
19657	SCOTT FINE	03/03/2022	Regular	0.00	37.00	187661
022422	Invoice	02/24/2022	Basketball Official Jan 2022	0.00	37.00	
12607	TIM GIBSON	03/03/2022	Regular	0.00	100.00	187662
022422	Invoice	02/24/2022	Basketball Official Jan 2022	0.00	100.00	
12703	UNITED WAY OF METRO CHICAGO	03/03/2022	Regular	0.00	26.00	187663
022422 United way	Invoice	02/24/2022	02/24/22 United Way	0.00	26.00	
17590	V3 CONSTRUCTION GROUP LTD	03/03/2022	Regular	0.00	1,090.00	187664
122442	Invoice	02/11/2022	Millard Bluff Final Design and Permit	0.00	1,090.00	
17515	WINDSTREAM	03/03/2022	Regular	0.00	2,506.55	187665

Check Register

Vendor Number	Vendor DBA Name	Payment Date	Payment Type	Discount Amount	Payment Amount	Number
Payable #	Payable Type	Payable Date	Payable Description	Discount Amount	Payable Amount	
74593046	Invoice	02/22/2022	February 2021	0.00	2,506.55	

Bank Code AP Summary

Payment Type	Payable Count	Payment Count	Discount	Payment
Regular Checks	80	48	0.00	349,271.52
Manual Checks	0	0	0.00	0.00
Voided Checks	0	0	0.00	0.00
Bank Drafts	0	0	0.00	0.00
EFT's	0	0	0.00	0.00
	80	48	0.00	349,271.52



Park District of Highland Park, IL

Check Register

Packet: APPKT03048 - 02/23/22 NIKE Pmt

By Check Number

Vendor Number	Vendor Name	Payment Date	Payment Type	Discount Amount	Payment Amount	Number
Bank Code: AP-AP BANK 16898	NIKE USA, INC	02/24/2022	Bank Draft	0.00	209.34	DFT0003372

Bank Code AP Summary

Payment Type	Payable Count	Payment Count	Discount	Payment
Regular Checks	0	0	0.00	0.00
Manual Checks	0	0	0.00	0.00
Voided Checks	0	0	0.00	0.00
Bank Drafts	1	1	0.00	209.34
EFT's	0	0	0.00	0.00
	1	1	0.00	209.34



Park District of Highland Park, IL

Check Register

Packet: APPKT03047 - 02/24/22 Payroll Wire transfers

By Check Number

Vendor Number	Vendor Name	Payment Date	Payment Type	Discount Amount	Payment Amount	Number
Bank Code: PAYROLL-PAYROLL BANK						
19658	HEALTHEQUITY INC	02/24/2022	Bank Draft	0.00	192.30	DFT0003366
10058	AFLAC	02/24/2022	Bank Draft	0.00	691.50	DFT0003367
11177	ILL MUNICIPAL RETIREMENT FUND	02/24/2022	Bank Draft	0.00	4,649.27	DFT0003368
11177	ILL MUNICIPAL RETIREMENT FUND	02/24/2022	Bank Draft	0.00	24,327.69	DFT0003369
11177	ILL MUNICIPAL RETIREMENT FUND	02/24/2022	Bank Draft	0.00	8,383.27	DFT0003370

Bank Code PAYROLL Summary

Payment Type	Payable Count	Payment Count	Discount	Payment
Regular Checks	0	0	0.00	0.00
Manual Checks	0	0	0.00	0.00
Voided Checks	0	0	0.00	0.00
Bank Drafts	5	5	0.00	38,244.03
EFT's	0	0	0.00	0.00
	5	5	0.00	38,244.03



Park District of Highland Park, IL

Check Register

Packet: APPKT03049 - 02/28/22 Payroll Wire Transfers

By Check Number

Vendor Number	Vendor Name	Payment Date	Payment Type	Discount Amount	Payment Amount	Number
Bank Code: PAYROLL-PAYROLL BANK						
19658	HEALTHEQUITY INC	02/28/2022	Bank Draft	0.00	3.85	DFT0003373
19658	HEALTHEQUITY INC	02/28/2022	Bank Draft	0.00	57.75	DFT0003374
19658	HEALTHEQUITY INC	02/28/2022	Bank Draft	0.00	11.55	DFT0003375

Bank Code PAYROLL Summary

Payment Type	Payable Count	Payment Count	Discount	Payment
Regular Checks	0	0	0.00	0.00
Manual Checks	0	0	0.00	0.00
Voided Checks	0	0	0.00	0.00
Bank Drafts	3	3	0.00	73.15
EFT's	0	0	0.00	0.00
	3	3	0.00	73.15



Park District of Highland Park, IL

Check Register

Packet: APPKT03046 - BofA 01/08/22-02/07/22

By Check Number

Vendor Number	Vendor Name	Payment Date	Payment Type	Discount Amount	Payment Amount	Number
10313	BOA P-CARD STATEMENTS	02/25/2022	Bank Draft	0.00	114,036.06	DFT0003353

Bank Code AP Summary

Payment Type	Payable Count	Payment Count	Discount	Payment
Regular Checks	0	0	0.00	0.00
Manual Checks	0	0	0.00	0.00
Voided Checks	0	0	0.00	0.00
Bank Drafts	2	1	0.00	114,036.06
EFT's	0	0	0.00	0.00
	2	1	0.00	114,036.06

Vendor Name	Item Total
HYATT REGENCY CHICAGO	\$381.86
JEWEL OSCO 3459	\$21.22
SQ DEVILS LAKE CLIMBI	\$1,141.47
DNR LICENSE OR CAMP SA	\$66.44
DNR WS2 PRK PARKS EPAY	\$167.95
SQ DEVILS LAKE CLIMBI	\$1,606.32
ILLINOIS ASSOCIATION O	(\$285.00)
VARIDESK 1800 207 258	\$395.00
THE DOCK DOCTORS, LLC	\$2,359.48
CRAFTWOOD LUMBER & HAR	\$14.99
BURRIS EQUIPMENT CO.	\$44.60
CRAFTWOOD LUMBER & HAR	\$169.99
MUTUAL ACE HARDWARE &	\$28.42
AMZN MKTP US CP3TH24N3	\$12.99
CRAFTWOOD LUMBER & HAR	\$89.99
AMAZON.COM PX4SE1R33 A	\$33.05
AMZN MKTP US 687S26Z33	\$23.98
AMZN Mktp US RB7R242C3	\$19.24
AMZN MKTP US 687S26Z33	\$73.53
ILLINOIS ASSOCIATION O	(\$310.00)
AMZN MKTP US RO00C38O3	\$341.10
MENARDS 3327	\$10.13
MUTUAL ACE HARDWARE &	\$23.12
MUTUAL ACE HARDWARE &	\$69.93
MUTUAL ACE HARDWARE &	\$2.27
MENARDS 3327	\$12.74
BURRIS EQUIPMENT CO.	\$20.95
MUTUAL ACE HARDWARE &	(\$69.93)
MUTUAL ACE HARDWARE &	\$92.45
MUTUAL ACE HARDWARE &	\$8.32
MUTUAL ACE HARDWARE &	\$14.52
TSZ TRAFFIC SAFETY ZON	\$156.56
DTV DIRECTV SERVICE	\$278.99
INTERNATIONAL TRANSACTION	\$0.44
AFFINITY	\$54.99
INTERNATIONAL TRANSACTION	\$1.25
GRUBHUBBACKYARDGRILL	\$137.96
AMZN MKTP US 5L4HH8KH3	\$242.10
AMZN Mktp US 3B11Q9GT3	\$10.57
AMAZON.COM 2631V6GP3 A	\$7.79
AMZN Mktp US WO0P76FY3	\$7.99
AMZN MKTP US LE5HC2OY3	\$14.99
AMAZON.COM JF81C7J73 A	\$32.99
AMZN MKTP US 3O10X5VO3	\$19.99
AMZN MKTP US FP4EC1X83	\$361.23
AMZN MKTP US D16YZ5IS3	\$79.08
AMZN MKTP US 3O10X5VO3	\$14.20
AMZN MKTP US AMZN.COM/	(\$285.00)
AMZN Mktp US 7X34X7403	\$149.99
AMZN MKTP US ND1ZS4UT3	\$74.56
AMZN MKTP US P12JD47X3	\$132.19

AMZN MKTP US IN4M23SP3	\$12.86
DK ORGANICS	\$796.40
MARK VEND CO.	\$20.49
MARK VEND CO.	\$6.96
AMERICAN SOCIETY OF LA	\$495.00
ILLINOIS ASSOCIATION O	(\$285.00)
RENAISSANCE SCHAUMB F&	\$26.84
RENAISSANCE SCHAUMB F&	\$25.72
RENAISSANCE SCHAUMB F&	\$26.84
CLIFFORD WALD AND COMP	\$345.00
FIORE NURSERY AND LAND	\$69.00
FIORE NURSERY AND LAND	(\$69.00)
IPRA	\$45.00
POTBELLY #8	\$63.86
SPOTHERO 844-356-8054	\$43.75
NTLREST SERVSAFE	\$15.00
BARNABYS OF NORTHBROOK	\$87.25
AMZN MKTP US W46JQ5CJ3	\$37.36
AMAZON US RETAIL	\$23.51
PARTY CITY 168	\$25.00
JEWEL OSCO 3459	\$18.65
MSI CHICAGO	\$147.50
TARGET 00011684	\$15.99
THE HOME DEPOT #1926	\$15.16
CRAFTWOOD LUMBER & HAR	\$33.04
ILLINOIS ASSOCIATION O	(\$285.00)
MailChimp	\$220.00
PAYPAL RAINOUTLINE	\$399.00
DROPBOX 6MH7W7ZMBTQV	\$11.99
IN THE LOCAL MOMS NET	\$500.00
STAPLES 00116616	\$11.98
TEAMSNAP.COM	\$9.99
ONE DAY SHOOTOUTS	\$149.00
ONE DAY SHOOTOUTS	\$249.00
ONE DAY SHOOTOUTS	\$149.00
FRIENDS OF THE FOREST	\$300.00
IN TGF FORESTRY & FIR	\$1,560.00
HEY AND ASSOCIATES INC	\$1,920.00
HEY AND ASSOCIATES INC	\$435.00
POTBELLY # 8	\$60.58
ILLINOIS ASSOCIATION O	(\$335.00)
ILLINOIS ASSOC OF PARK	\$419.00
ILLINOIS ASSOC OF PARK	\$110.00
ILLINOIS ASSOC OF PARK	\$239.00
AMZN MKTP US IW6JK7XN3	\$274.72
AMZN MKTP US W06NB3103	\$28.32
AMZN MKTP US Q111B9QX3	\$42.79
AMAZON.COM 1Z2T55RE3 A	\$14.69
AMZN Mktp US G132E3BI3	\$20.54
AMZN MKTP US LW3554MT3	\$138.96
AMAZON.COM J175B2VR3 A	\$19.99
ILLINOIS ASSOCIATION O	\$310.00

ILLINOIS ASSOCIATION O	(\$401.00)
ONE DAY SHOOTOUTS	\$298.00
ONE DAY SHOOTOUTS	\$149.00
SUPREME COURTS	(\$135.00)
CHICAGO DOGS I	\$100.00
CRAFTWOOD LUMBER & HAR	\$17.67
CRAFTWOOD LUMBER & HAR	\$33.27
MUTUAL ACE HARDWARE &	\$27.74
PARK DISTRICT OF HIGHL	\$1.00
AMAZON.COM 1T8EP1XR0 A	\$99.96
AMZN MKTP US WV3U08EX3	\$35.99
AMAZON.COM W75BE4TK3 A	\$33.12
AMZN Mktp US MF1ZV25D3	\$70.16
AMAZON.COM SQ3Y72R63 A	\$88.63
FEDEX 289192662638	\$46.80
AMZN MKTP US 8A3MM4C33	\$65.25
AMZN MKTP US 4661S3C03	\$115.00
ZOOM.US 888-799-9666	\$114.95
AMAZON.COM BV0OA8613 A	\$189.99
AMAZON.COM 0H4US8QQ3 A	\$189.99
AMZN MKTP US 0Q6PH6TR3	\$34.98
JAMF	\$717.50
JAMF	\$143.50
KERI SYSTEMS INC	\$119.50
GOOGLE GSUITE PDHP.ORG	\$6.00
ADOBE ACROPRO SUBS	\$78.76
KERI SYSTEMS INC	\$47.80
KERI SYSTEMS INC	\$131.45
APPLE.COM/US	\$1,381.20
APPLE.COM/US	\$83.94
KERI SYSTEMS INC	\$71.70
AMAZON.COM OP3EI5KT3 A	\$189.99
KERI SYSTEMS INC	\$227.05
KERI SYSTEMS INC	\$47.80
KERI SYSTEMS INC	\$47.80
ZOOM.US 888-799-9666	\$7.73
KERI SYSTEMS INC	\$11.95
KERI SYSTEMS INC	\$11.95
KERI SYSTEMS INC	\$11.95
KERI SYSTEMS INC	\$11.95
KERI SYSTEMS INC	\$11.95
KERI SYSTEMS INC	\$83.65
KERI SYSTEMS INC	\$23.90
B&H PHOTO 800-606-6969	\$96.12
Chicago Communications	\$587.00
B&H PHOTO 800-606-6969	(\$7.12)
KERI SYSTEMS INC	\$23.90
KERI SYSTEMS INC	\$71.70
KERI SYSTEMS INC	\$47.80
KERI SYSTEMS INC	\$23.90
KERI SYSTEMS INC	\$59.75
KERI SYSTEMS INC	\$71.70

KERI SYSTEMS INC	\$35.85
CRAFTWOOD LUMBER & HAR	\$18.25
CRAFTWOOD LUMBER & HAR	\$38.97
CRAFTWOOD LUMBER & HAR	\$17.49
NTLREST SERVSAFE	\$15.00
AMZN MKTP US WM1566TH3	\$8.89
JEWEL OSCO 3459	\$61.55
AMZN MKTP US T10K03QX3	\$29.80
AMZN MKTP US 1T8DZ1MR2	\$26.28
JEWEL OSCO 3459	\$23.42
TARGET 00011684	\$32.61
AMZN MKTP US WI5M02G93	\$17.88
TARGET 00011684	(\$1.79)
TARGET 00011684	\$20.31
AMZN Mktp US NS7Q93SM3	\$10.49
AMZN MKTP US D64GS4C33	\$14.89
JEWEL OSCO 3459	\$21.96
TARGET 00011684	\$11.48
JEWEL OSCO 3459	\$64.00
STAPLES 00116616	\$8.79
AMAZON.COM H71284HE3 A	\$25.49
DOLLARTREE	\$17.50
TARGET 00011684	\$35.13
THE HOME DEPOT #1926	\$99.08
CRAFTWOOD LUMBER & HAR	\$134.54
THE HOME DEPOT #1926	\$332.16
CRAFTWOOD LUMBER & HAR	\$45.95
NRPA OPERATING	\$327.05
READYREFRESH BY NESTLE	\$79.93
NRPA OPERATING	\$325.00
NRPA OPERATING	\$650.00
CRAFTWOOD LUMBER & HAR	\$5.79
MUTUAL ACE HARDWARE &	\$217.00
CRAFTWOOD LUMBER & HAR	\$93.98
AMAZON.COM G227F2J73 A	\$39.95
AMZN MKTP US 7S5WQ7O53	\$9.99
IN CANNONBALL POOL SE	\$4,844.98
WWP SMITHEREEN PEST MA	\$62.00
JORSON AND CARLSON COM	\$35.76
THE HOME DEPOT #1926	\$221.98
THE HOME DEPOT #1926	\$15.77
THE TRANE COMPANY	\$1,016.00
THE HOME DEPOT #1926	\$38.64
MENARDS 3327	\$109.40
GRAINGER	\$498.08
G.W. BERKHEIMER AH	\$362.84
GRAINGER	\$198.49
G&O THERMAL SUPPLY CO	\$1,323.00
CRAFTWOOD LUMBER & HAR	\$17.98
MUTUAL ACE HARDWARE &	\$9.15
G&O THERMAL SUPPLY CO	\$1,323.00
G.W. BERKHEIMER AH	\$1,012.81

CRAFTWOOD LUMBER & HAR	\$23.54
MUTUAL ACE HARDWARE &	\$60.06
JOHNSTONE SUPPLY - 564	\$104.31
SUPPLYHOUSE.COM	\$389.99
MUTUAL ACE HARDWARE &	\$14.76
THE HOME DEPOT #1926	\$9.48
SPOTHERO 844-356-8054	\$17.25
MICHAELS STORES 9048	\$14.97
JEWEL OSCO 3459	\$20.54
ACT Dupage Forest	\$30.00
DNR LICENSE OR CAMP SA	\$107.31
SCP- DISTRIBUTORS- 678	\$5,399.00
SPOTHERO 844-356-8054	\$55.25
NRPA OPERATING	\$65.00
NTLREST SERVSAFE	\$15.00
HYATT REGENCY CHICAGO	\$302.86
AMAZON.COM VB0VC9JX3 A	\$99.00
AMZN MKTP US RW8JG1UM3	\$12.99
AMZN MKTP US VD5IA1JW3	\$179.86
AMERICAN OUTFITTERS LT	\$258.00
AMZN MKTP US WH1D94U23	\$83.86
AMZN MKTP US TL0HU13F3	\$34.98
AMZN MKTP US 0W8GI6JE3	\$145.82
PARTY CITY 168	\$127.80
AMZN Mktp US DA2EQ8RO3	\$16.00
JEWEL OSCO 3465	\$93.21
INTERNATIONAL TRANSACTION	\$25.60
EPACT NETWORK LTD	\$3,200.00
IN SALVI SPORTS ENTER	\$100.00
PAYPAL MIKEJANSENMUSI	\$500.00
SITEONE LANDSCAPE SUPP	\$91.14
SITEONE LANDSCAPE SUPP	\$491.70
LCHD FINANCE	\$288.00
NATIONAL PEN CO LLC	\$2,187.63
NATIONAL PEN CO LLC	\$309.67
SPOTHERO 844-356-8054	\$75.75
SPOTHERO 844-356-8054	(\$75.75)
HYATT REG CHICAGO PRK	\$79.00
HYATT REG CHICAGO PRK	\$45.00
SQ A AND C TAXI COMPA	\$17.00
WWP ROSE PEST SOLUTION	\$114.00
CRAFTWOOD LUMBER & HAR	\$41.48
BATTERIES PLUS #0576	\$657.60
HD SUPPLY FACILITIES	\$45.00
BATTERIES PLUS #0576	(\$657.60)
ZORO TOOLS INC	\$41.24
AMZN Mktp US AW0UW7Z03	\$48.97
THE HOME DEPOT #1926	\$148.15
GRAINGER	\$139.83
GRAINGER	\$16.08
GRAINGER	\$457.68
GRAINGER	\$34.68

GRAINGER	\$16.73
GRAINGER	\$141.32
GRAINGER	\$115.50
GRAINGER	\$103.90
MUTUAL ACE HARDWARE & ACE HARDWARE	\$62.86
MUTUAL ACE HARDWARE & HALOGEN SUPPLY COMPANY	\$19.77
HALOGEN SUPPLY COMPANY	\$19.04
HALOGEN SUPPLY COMPANY	\$140.16
HALOGEN SUPPLY COMPANY	\$983.72
HALOGEN SUPPLY COMPANY	\$639.44
HALOGEN SUPPLY COMPANY	\$154.04
HP CHAMBER OF COMMERCE	\$1,250.00
HYATT REGENCY CHICAGO	\$572.79
DD/BR #336980	\$15.53
USPS PO 1636060035	\$5.31
TRIBUNE PUBLISHING COM	\$285.00
AT&T PREMIER EBILL	\$49.98
AT&T PAYMENT	\$4.39
COMCAST CHICAGO	\$322.75
COMCAST BUSINESS	\$1,041.91
AT&T PAYMENT	\$1.76
COMCAST BUSINESS	\$462.65
AT&T PREMIER EBILL	\$301.55
AT&T PAYMENT	\$4.83
COMCAST BUSINESS	\$1,019.69
BHFX #10	\$70.00
BHFX #10	\$20.00
AT&T PAYMENT	\$2.63
COMCAST BUSINESS	\$493.18
AT&T PREMIER EBILL	\$102.26
AT&T PAYMENT	\$8.31
COMCAST BUSINESS	\$1,437.45
AT&T PAYMENT	\$1.76
COMCAST BUSINESS	\$462.65
AT&T PREMIER EBILL	\$24.88
AT&T PAYMENT	\$1.76
COMCAST BUSINESS	\$462.65
AT&T PREMIER EBILL	\$109.58
AT&T PAYMENT	\$0.44
COMCAST BUSINESS	\$330.80
AT&T PAYMENT	\$0.44
COMCAST BUSINESS	\$43.95
AT&T PAYMENT	\$0.44
COMCAST BUSINESS	\$293.33
AT&T PAYMENT	\$0.44
COMCAST BUSINESS	\$542.71
AT&T PAYMENT	\$0.44
COMCAST BUSINESS	\$542.71
CALL ONE	\$73.96
AT&T PAYMENT	\$3.07
COMCAST CHICAGO	\$299.85
COMCAST BUSINESS	\$307.65

AT&T PAYMENT	\$0.88
COMCAST BUSINESS	\$337.28
AT&T PAYMENT	\$0.88
COMCAST CHICAGO	\$151.85
COMCAST BUSINESS	\$337.28
AT&T PREMIER EBILL	\$28.97
AT&T PAYMENT	\$2.63
COMCAST BUSINESS	\$862.21
AT&T PREMIER EBILL	\$43.23
AT&T PAYMENT	\$1.76
COMCAST BUSINESS	\$375.31
AT&T PAYMENT	\$0.88
COMCAST BUSINESS	\$287.40
AT&T PAYMENT	\$2.19
COMCAST BUSINESS	\$1,217.27
AT&T PREMIER EBILL	\$71.05
AT&T PAYMENT	\$2.63
COMCAST BUSINESS	\$1,261.22
AT&T PREMIER EBILL	\$69.09
AT&T PAYMENT	\$1.32
COMCAST CHICAGO	\$293.49
COMCAST BUSINESS	\$131.85
CRAFTWOOD LUMBER & HAR	\$9.99
AMAZON.COM IS76G8SJ3 A	\$149.95
CRAFTWOOD LUMBER & HAR	\$15.18
AMAZON.COM E23VW5P93 A	\$90.61
AMAZON.COM AMZN.COM/BI	(\$90.61)
IDLEWOOD ELECTRIC SUPP	\$101.88
IDLEWOOD ELECTRIC SUPP	\$728.47
GRAINGER	\$175.61
IDLEWOOD ELECTRIC SUPP	\$345.00
IDLEWOOD ELECTRIC SUPP	\$82.02
IDLEWOOD ELECTRIC SUPP	\$122.91
CRAFTWOOD LUMBER & HAR	\$5.99
GRAINGER	\$112.47
IDLEWOOD ELECTRIC SUPP	\$111.24
CRAFTWOOD LUMBER & HAR	\$9.58
AMZN Mktp US E52206CK3	\$11.45
AMZN MKTP US 808JO7IH3	\$43.77
PAYPAL MAGCS INC MAGC	\$125.00
MUTUAL ACE HARDWARE & SPRAYER SUPPLIES	\$78.11 \$77.20
NAPA AUTO PRTS HIGHLAN	\$147.13
AMAZON.COM H36Z55Q03 A	\$42.00
CERAMIC SUPPLY CHICAGO	\$236.50
CERAMIC SUPPLY CHICAGO	(\$33.00)
CERAMIC SUPPLY CHICAGO	\$27.50
AMZN MKTP US UL5UP2913	\$23.47
THE HOME DEPOT #1926	\$18.87
BANNER PLUMBING SUPPLY	(\$87.31)
BANNER PLUMBING SUPPLY	\$49.44
MENARDS 3327	\$62.98

BANNER PLUMBING SUPPLY	(\$49.44)
AMZN MKTP US 236HD7443	\$109.99
CRAFTWOOD LUMBER & HAR	\$5.99
METAL SUPERMARKETS NIL	\$69.69
SQ LAKESIDE GLASS & M	\$225.00
CRAFTWOOD LUMBER & HAR	\$9.49
CRAFTWOOD LUMBER & HAR	(\$3.50)
AMZN MKTP US 296V93803	\$9.99
NAPA AUTO PRTS HIGHLAN	\$63.68
NAPA AUTO PRTS HIGHLAN	\$37.80
NAPA AUTO PRTS HIGHLAN	\$44.95
NAPA AUTO PRTS HIGHLAN	\$84.84
NAPA AUTO PRTS HIGHLAN	\$94.30
NAPA AUTO PRTS HIGHLAN	\$30.90
NAPA AUTO PRTS HIGHLAN	\$58.02
NAPA AUTO PRTS HIGHLAN	\$15.33
NAPA AUTO PRTS HIGHLAN	\$35.77
NAPA AUTO PRTS HIGHLAN	\$12.84
AMZN MKTP US KK8S890M3	\$47.98
NAPA AUTO PRTS HIGHLAN	\$70.14
AMZN Mktp US VW68Z1BX3	\$80.97
AMZN MKTP US BG42Q0YH3	\$152.88
NAPA AUTO PRTS HIGHLAN	\$28.84
NAPA AUTO PRTS HIGHLAN	\$68.94
NAPA AUTO PRTS HIGHLAN	\$46.72
NAPA AUTO PRTS HIGHLAN	\$44.88
NAPA AUTO PRTS HIGHLAN	\$222.74
NAPA AUTO PRTS HIGHLAN	\$72.41
NAPA AUTO PRTS HIGHLAN	\$56.30
NAPA AUTO PRTS HIGHLAN	\$33.00
NAPA AUTO PRTS HIGHLAN	\$57.15
EXTREME TOWING	\$225.00
NAPA AUTO PRTS HIGHLAN	\$51.96
NAPA AUTO PRTS HIGHLAN	(\$41.48)
NAPA AUTO PRTS HIGHLAN	\$55.38
NAPA AUTO PRTS HIGHLAN	\$51.58
NAPA AUTO PRTS HIGHLAN	\$77.52
NAPA AUTO PRTS HIGHLAN	\$74.83
AMZN MKTP US KY5O40CG3	\$50.96
NAPA AUTO PRTS HIGHLAN	\$86.46
NAPA AUTO PRTS HIGHLAN	\$23.04
NAPA AUTO PRTS HIGHLAN	\$103.11
NAPA AUTO PRTS HIGHLAN	\$159.53
POWER MOWER SALES WEB	\$364.99
AMZN MKTP US V84TV23G3	\$63.96
NAPA AUTO PRTS HIGHLAN	\$148.39
NAPA AUTO PRTS HIGHLAN	\$60.66
NAPA AUTO PRTS HIGHLAN	\$61.34
NAPA AUTO PRTS HIGHLAN	\$48.54
NAPA AUTO PRTS HIGHLAN	\$24.49
NAPA AUTO PRTS HIGHLAN	\$141.47
NAPA AUTO PRTS HIGHLAN	\$11.02

NAPA AUTO PRTS HIGHLAN	\$47.80
NAPA AUTO PRTS HIGHLAN	\$102.46
NAPA AUTO PRTS HIGHLAN	\$41.36
NAPA AUTO PRTS HIGHLAN	\$119.75
NAPA AUTO PRTS HIGHLAN	\$68.17
NAPA AUTO PRTS HIGHLAN	\$71.92
NAPA AUTO PRTS HIGHLAN	\$95.46
NAPA AUTO PRTS HIGHLAN	\$54.88
AMZN MKTP US OZ9PW8JN3	\$65.92
NAPA AUTO PRTS HIGHLAN	\$90.60
NAPA AUTO PRTS HIGHLAN	\$203.45
FARM PARTS STORE	\$126.92
NAPA AUTO PRTS HIGHLAN	\$60.50
AMZN Mktp US 145A81523	\$103.96
ILLINOIS ASSOCIATION O	(\$430.00)
ILLINOIS ASSOCIATION O	(\$430.00)
ILLINOIS ASSOCIATION O	(\$215.00)
AMAZON.COM KY2KN69Y3 A	\$49.16
AMZN MKTP US 3J9G04XW3	\$6.99
AMZN MKTP US PP13312V3	\$13.50
AMZN MKTP US H63M23053	\$8.49
AMZN MKTP US KF1WO3063	\$31.37
AMZN MKTP US D79FP7QG3	\$13.09
AEREX PEST CONTROL SER	\$69.00
AMZN MKTP US 0D99T70D3	\$63.00
AMZN MKTP US D79FP7QG3	\$135.51
AMZN MKTP US D79FP7QG3	\$14.94
AMZN MKTP US D79FP7QG3	\$10.99
AMZN MKTP US D79FP7QG3	\$14.94
NATIVE RESTORATION ...	\$2,473.35
BURRIS EQUIPMENT CO.	\$20.95
BURRIS EQUIPMENT CO.	\$1,042.49
CRAFTWOOD LUMBER & HAR	\$30.34
JUST TIRES #1270	\$90.00
JUST TIRES #1270	\$117.00
JUST TIRES #1270	\$49.50
HYATT REGENCY CHICAGO	\$11.18
GIFTSHOPHYATTREGENCYCH	\$6.12
HYATT REGENCY CHICAGO	\$7.82
HYATT REGENCY CHICAGO	\$64.20
HYATT REGENCY CHICAGO	\$3.35
TST MERCADITO - CHICA	\$126.47
HYATT REGENCY CHICAGO	\$625.62
BED BATH & BEYOND #32	\$159.99
NORTHSHORE PHYSICIAN	\$234.00
NORTHSHORE PHYSICIAN	\$106.00
J2 EFAX SERVICES	\$16.95
AMZN MKTP US 3X39692R3	\$42.58
ILIPRA.ORG	\$180.00
ILIPRA.ORG	\$305.00
OFFICESUPPLY.COM	\$428.14
EFAVORMART.COM	\$127.97

EFAVORMART.COM	\$279.60
OFFICESUPPLY.COM	\$250.16
OFFICESUPPLY.COM	\$244.49
OFFICESUPPLY.COM	\$299.49
BODY ONE PRODUCTS	\$1,258.00
OFFICESUPPLY.COM	\$146.70
OFFICESUPPLY.COM	\$217.01
CRAFTWOOD LUMBER & HAR	\$9.99
WAREHOUSE DIRECT	\$394.14
MUTUAL ACE HARDWARE &	\$13.82
CRAFTWOOD LUMBER & HAR	\$4.99
CRAFTWOOD LUMBER & HAR	\$45.04
CRAFTWOOD LUMBER & HAR	\$20.99
MUTUAL ACE HARDWARE &	\$27.74
CRAFTWOOD LUMBER & HAR	\$86.97
CRAFTWOOD LUMBER & HAR	\$15.99
MUTUAL ACE HARDWARE &	\$55.47
CRAFTWOOD LUMBER & HAR	\$11.59
CRAFTWOOD LUMBER & HAR	\$77.97
SHERWIN WILLIAMS 70190	\$304.08
MUTUAL ACE HARDWARE &	\$19.55
CRAFTWOOD LUMBER & HAR	\$62.69
CRAFTWOOD LUMBER & HAR	\$28.18
CRAFTWOOD LUMBER & HAR	\$50.15
CRAFTWOOD LUMBER & HAR	\$16.37
CRAFTWOOD LUMBER & HAR	\$63.25
CRAFTWOOD LUMBER & HAR	\$31.57
SHERWIN WILLIAMS 70190	\$59.65
CRAFTWOOD LUMBER & HAR	\$17.97
CRAFTWOOD LUMBER & HAR	\$18.99
MUTUAL ACE HARDWARE &	\$221.86
AMAZON.COM JB5W291J3 A	\$24.98
CRAFTWOOD LUMBER & HAR	\$33.95
CRAFTWOOD LUMBER & HAR	\$236.79
CRAFTWOOD LUMBER & HAR	\$332.06
BURRIS EQUIPMENT CO.	\$466.00
BURRIS EQUIPMENT CO.	\$466.00
NAPA AUTO PRTS HIGHLAN	\$499.00
NAPA AUTO PRTS HIGHLAN	\$79.97
NAPA AUTO PRTS HIGHLAN	(\$27.00)
NAPA AUTO PRTS HIGHLAN	\$159.99
REVELS TURF & TRACTOR	\$219.11
NAPA AUTO PRTS HIGHLAN	\$471.97
NAPA AUTO PRTS HIGHLAN	\$473.00
NAPA AUTO PRTS HIGHLAN	(\$519.17)
AMZN Mktp US LQ4RO81S3	\$129.88
NAPA AUTO PRTS HIGHLAN	\$105.59
REVELS TURF & TRACTOR	\$151.23
REINDERS SUSSEX CUSTOM	\$277.61
THE HOME DEPOT #1941	\$185.12
ILLINOIS ASSOCIATION O	(\$285.00)
GoPro Inc.	\$506.44

GoPro Subscription	\$49.99
MUTUAL ACE HARDWARE &	\$36.99
CRAFTWOOD LUMBER & HAR	\$62.30
WAREHOUSE DIRECT	\$132.58
ALLIANZ TRAVEL INS	\$25.97
PGAMERCHANDISESHOW	\$450.00
AMERICAN 00123240685198	\$152.20
PUB ORLANDO	\$19.25
ORANGE COUNTY C C CONC	\$19.00
ROSEN INN PT ZEBRA BAR	\$17.82
ROSEN INN PT PLAZA GDN	\$17.66
ROSEN INN PT ORLANDO	\$371.25
RENTOKIL NA, INC	\$68.00
RENTOKIL NA, INC	\$68.00
HORNUNG S GOLF PRODS	\$612.40
FOREUP - BILLING - MOT	\$590.00
IN GALLUS GOLF LLC	\$1,475.00
STAPLES DIRECT	\$49.99
EMPIRE COOLER SERVICE	\$150.00
EMPIRE COOLER SERVICE	\$150.00
HORNUNG S GOLF PRODS	\$168.78
The Webstaurant Store	\$50.74
STAPLES DIRECT	\$38.99
STAPLES DIRECT	\$7.29
STAPLES DIRE	\$60.99
ACUSHNET BILLTRUST	\$513.00
DTV DIRECTV SERVICE	\$242.98
DTV DIRECTV SERVICE	\$242.98
CALLAWAY	\$178.20
CALLAWAY	\$50.00
ACUSHNET BILLTRUST	\$130.31
ACUSHNET BILLTRUST	\$132.30
ACUSHNET BILLTRUST	\$388.08
ILLINOIS ASSOCIATION O	(\$310.00)
DTV DIRECTV SERVICE	\$184.98
WAREHOUSE DIRECT	\$138.55
SANTO SPORT STORE	\$209.00
EXPERIENTIAL SYSTEMS	\$104.98
AAU	\$17.56
SANTO SPORT STORE	\$674.35
THE ATHLETIC EQUIPMENT	\$185.00
NTLREST SERVSAFE	\$15.00
PARTY CITY 168	\$46.00
AMZN MKTP US 1V1152G03	\$80.89
AMZN Mktp US	(\$90.98)
WM SUPERCENTER #3893	\$112.51
USPS PO 1636060035	\$11.60
AMAZON.COM LB7S30CS3 A	\$41.80
AMAZON.COM AJ5T56KY3 A	\$5.91
AMZN MKTP US IL0MT9KD3	\$49.80
AMZN MKTP US GY9F24IU3	\$35.96
TARGET 00013854	\$20.97

#33 LAKESHORE LEARNING	\$215.93
WAL-MART #5276	\$50.30
#33 LAKESHORE LEARNING	\$39.99
AMZN MKTP US J33JD44O3	\$64.86
TARGET 00010702	(\$20.97)
AMZN MKTP US 288LL19B3	\$57.96
AMZN MktP US PM5BJ9VC3	\$17.78
CRAFTWOOD LUMBER & HAR	\$33.46
AMERICAN TAXI DISPATCH	\$60.00
ILLINOIS ASSOCIATION O	(\$285.00)
FELLERS INC	\$127.49
THREADLESS	\$254.04
THREADLESS	(\$151.67)
USPS PO 1636060035	\$59.78
QR-CODE-GENERATOR.COM	\$168.28
INTERNATIONAL TRANSACTION	\$1.68
CLIFFORD WALD AND COMP	\$446.22
CLIFFORD WALD AND COMP	\$732.04
AMZN MKTP US KT6MF79J3	\$23.99
THREADLESS	\$194.97
THREADLESS	(\$11.47)
THREADLESS	(\$11.47)
FELLERS INC	\$38.97
ZOOM.US 888-799-9666	\$14.99
TARGET 00011684	\$39.99
LEARN TO SKATE USA	\$17.25
ILLINOIS ASSOCIATION O	(\$285.00)
Park District Risk Man	\$199.00
MARIANOS #542	\$8.98
MARIANOS #542	\$30.00
AMZN MKTP US 3U6HJ5NZ3	\$19.79
AMAZON.COM TS5G506K3 A	\$49.57
AMAZON.COM B64CZ6CR3 A	\$23.81
AMZN MKTP US 0L9727PK3	\$88.88
AMZN MKTP US 128CJ1LX1	\$59.63
THE GRAPHIC EDGE INC	\$176.76
WEISSMAN'S THEATRICAL	\$300.65
AMZN MKTP US JK09N2A83	\$47.96
AMZN MKTP US HS40N6IK3	\$20.97
AMZN MKTP US UD6AE0JX3	\$13.99
CHICAGO FSC	\$85.00
AMZN MKTP US ZI3G88FZ3	\$26.87
REVDANCE.TENTH HOUSE	\$64.99
DANSCO	\$54.99
REVDANCE.TENTH HOUSE	\$114.55
DANSCO	\$49.99
WHIRLYBALL VERNON HILL	\$420.00
CHICAGO SKY	\$128.00
DOLLARTREE	\$96.25
NTLREST SERVSAFE	\$15.00
JEWEL OSCO 3475	\$13.98
DOLLARTREE	\$22.50

AMZN MKTP US TZ5T26YS3	\$52.13
HOBBY-LOBBY #0195	\$9.96
JEWEL OSCO 3459	\$30.23
OFFICEMAX/OFFICEDEPT#3	\$8.99
JEWEL OSCO 3475	\$26.93
WHOLEFDS DRF 10116	\$12.57
CRAFTWOOD LUMBER & HAR	\$29.35
CRAFTWOOD LUMBER & HAR	\$18.98
ROGANS SHOES INC BUFFA	\$150.00
HYATT REGENCY CHICAGO	\$302.86
NTLREST SERVS SAFE	\$15.00
AMZN MKTP US O84I68QD3	\$141.67
AMZN MKTP US MD7W11ZM3	\$19.99
AMZN MKTP US YY8LR9SJ3	\$52.34
HOMEDEPOT.COM	\$479.64
AMAZON.COM OH9J56CM3 A	\$19.98
AMZN MKTP US 1B61O3OU3	\$90.53
AMERICAN RED CROSS	\$181.45
S&S WORLDWIDE, INC.	\$52.87
AMZN MKTP US T239Q1X43	\$86.70
FUN EXPRESS	\$121.04
TARGET 00011684	\$18.58
AMERICAN RED CROSS	\$120.00
AMZN MKTP US 6D0RG80B3	\$6.99
AMZN MKTP US NG2OB5YE3	\$181.61
JEWEL OSCO 3459	\$8.67
RUSH TRK CTR HUNTLEY	\$3,751.00
RUSH TRK CTR HUNTLEY	\$1,416.71
MUTUAL ACE HARDWARE &	\$15.70
ILLINOIS ASSOCIATION O	(\$285.00)
FACEBK 7RWB8BTFW2	\$128.90
FACEBK 7RWB8BTFW2	\$99.90
FACEBK 7RWB8BTFW2	\$65.29
COMCAST CHICAGO	\$57.88
AMZN MKTP US ZE3LZ15Z3	\$171.98
WAREHOUSE DIRECT	\$48.52
YOUR ADVANTAGE II LT	\$549.00
PICKLEBALLCENTRAL	\$129.99
	<hr/>
	\$114,036.06

Item Description

Hotel for IPRA conference
Candy prizes
Rock climbing trip devils lake
Campsite at Mississippi Palisades
Campsite at Mirror Lake
Rock climbing trip Mississippi Palisades
refund for IPRA conference
New Desk stand
New rack system for small craft storage
Work Glove.
motor oil, filters .
Ford-Key
carburetor cleaner supplies.
Filter & spark plug.
Ford F-150 Key.
Youth Clay class supplies
Clay Play class supplies
Art supplies
Art class supplies
ILLINOIS ASSOCIATION O - Credit
Travel Baseball Med Kits AMZN MKTP - Purchase
Fuel
Gloves
Micro Chain _ Purchase
Keys
Gloves
Chain Saw chain
Micro Chain__Return
Propane Fuel
Motor Oil
Keys and Sponges
TSZ TRAFFIC SAFETY ZON - Security building
DTV DIRECTV SERVICE for RCHP
INTERNATIONAL TRANSACTION -transaction verification for marketing software
AFFINITY software marketing
INTERNATIONAL BANK TRANSACTION VERIFICATION FOR MARKETING SOFTWARE
GRUBHUBBACKYARDGRILL -Stages Education training Lunch
AMZN MKTP US 5L4HH8KH3 - Office supplies membership
AMZN Mktp US 3B11Q9GT3 - office supplies membership
AMAZON.COM 2631V6GP3 A - office supplies
AMZN Mktp US WO0P76FY3 - Office supplie
AMZN MKTP US LE5HC2OY3 - office supplies
AMAZON.COM JF81C7J73 A - laminate sheets
AMZN MKTP US 3O10X5VO3 - 19.99
AMZN MKTP- Spin room media replacements/repairs
AMZN MKTP US D16YZ5IS3 - Spjn Room Media repairs
AMZN MKTP - 14.20 Cable equipment for stereo
AMZN MKTP US AMZN.COM/ - Credit (returned mixer)
AMZN Mktp US 7X34X7403 - Timer for Studio 1
AMZN MKTP US ND1ZS4UT3 - Spin Room media components
AMZN MKTP US P12JD47X3 - Group Ex Accessories

AMZN MKTP US IN4M23SP3 - Group Ex spin room accessories
2021 Top Dressing for Cunniff Fields
Vending Machines - Parks
Vending Machines - Golf
AMERICAN SOCIETY OF LA - Annual Dues (National & Illinois)
ILLINOIS ASSOCIATION O - Credit IRPA Conference registration
Landscape Conf - Lunch (Wed) ME
Landscape conference Friday lunch ME
Landscape conference - thursday lunch ME
Plotter ink for canon 8300 plotter
FIORE NURSERY AND LAND - Purchase
FIORE NURSERY AND LAND - Credit
CPRP Test Prep
Parks Lunch
Parking for Conference
Food Handler
BARNABYS OF NORTHBROOK - Purchase
HP Trivia
HP Trivia
HP Trivia
HP Trivia
Adventure Camp
HP Trivia
Foam
Materials to Refinish sink
ILLINOIS ASSOCIATION O - Credit
MailChimp - Purchase
PAYPAL RAINOUTLINE - Purchase
DROPBOX 6MH7W7ZMBTQV - Purchase
Summer Camp Guide Listings
office supplies
Basketball Schedule Software
Basketball Tournament
Basketball Shootout
Basketball Tournament
Chicago Wilderness Dues
Prescribed Burn __ Heller
HPCC Planning
Construction Phase Services Preserve
West Ridge Interviews/Working Lunch
ILLINOIS ASSOCIATION O - Credit R. Hejnowski Refund and 1 legislative table
IAPD - 4 digital & print copies of 8th edition Park District Law
IAPD - 2 digital copies 8th Edition Park District Law
IAPD - 4 print copies 8th edition park district law
AMZN MKTP US IW6JK7XN3 - office supplies
AMZN MKTP US W06NB3103 - office supplies
AMZN MKTP - wrc office supplies
AMAZON.COM - coffee supplies
AMZN - wrc office supplies
AMZN - wrc office supplies
AMAZON.COM wrc office supplies
IPRA Conference - Hilary Opland

IPRA Conference Return
Girls Feeder 1 day shootout 7th and 8th grade entry fee
Girls Feeder 1 day shootout
Girls Feeder Return on Cancelled Shootout
Chicago Dogs Game Deposit Field Trips-Varsity and JV
PROPANE CYLINDER
Blades for picnic table repairs
Lock for Cunniff Door
POS Test
Wireless Keyboard and Mouse (4)
AC/DC Power Converter
Power Strips (3)
Display Port Cables (8)
Display Port to DVI cables (10)
FEDEX 289192662638 - Purchase
Lenovo Tablet Charger(3)
Ricoh Toner
Zoom Monthly
Bryant's Bluetooth Adaptor
Dan's Bluetooth Adaptor
USB C to Ethernet Adaptor
iPad MDM
iPad MDM Support
Doors.Net Support Yearly
Google Apps -Monthly
Adobe Pro - Donna Ray (pro rated until renewal)
Doors.Net Support Yearly
Doors.Net Support Yearly
Monitor for Ryca
Apple Mouse for Ryca
Doors.Net Support Yearly
Bluetooth for Tony (also getting a PD Cell Phone) per Mitch
Doors.Net Support Yearly
Doors.Net Support Yearly
Doors.Net Support Yearly
Zoom - Added License for Liz V for Rec for Interviews
Doors.Net Support Yearly
Doors.Net Support Yearly
Doors.Net Support Yearly
Doors.Net Support Yearly
Doors.Net Support Yearly
Doors.Net Support Yearly
Doors.Net Support Yearly
Doors.Net Support Yearly
Doors.Net Support Yearly
Camera Extension Arm for SVGC Cart Barn
SVGC Camera Replacement of Bad Camera
Tax Credit
Doors.Net Support Yearly
Doors.Net Support Yearly
Doors.Net Support Yearly
Doors.Net Support Yearly
Doors.Net Support Yearly
Doors.Net Support Yearly

Doors.Net Support Yearly
Duct Tape and hose clamps
Primer and Paint Rec Office
Primer for Rec office
Food Handler
Saplins Supplies
Saplins Supplies
Saplins Supplies
Saplins Supplies
Saplins Supplies
Saplins Supplies
Saplins Supplies
Saplins Supplies
Saplins Supplies
Saplins Supplies
Saplins Supplies
Saplins Supplies
Saplins Supplies
Mighty Oaks Supplies
Saplins Supplies
Saplins Supplies
Saplins Supplies
Saplins Supplies
Saplins Supplies
Saplins Supplies
Painting Materials
Hardware for picnic table repairs
Picnic Table Lumber
Paint Materials for Rec Office
AF CPRP
WRC Water
EK CPRP
MM JR CPRP
Deep Socket Set
Hardware for picnic tables
Hardware for picnic Tables
AMAZON.COM G227F2J73 A - Case for PDHP phone
AMZN MKTP US 7S5WQ7O53 - WRC door dogging keys
IN CANNONBALL POOL SE - HCAP Pool winterization
WWP SMITHEREEN PEST MA - Purchase pest control
JORSON AND CARLSON COM - Purchase - Zam blade sharpening.
THE HOME DEPOT #1926 - Purchase
lock
THE TRANE COMPANY
Staple gun
Insulation
filters
board
circuit board
heat exchanger
rope
rtv gasket
heat exchanger
blower assembly

cut off wheel
Sawzall blades
thermostats
Bearing assembly
Cut off discs
Joint compound
Parking for IPRA
RIT Dye for Tie Dye
baking soda, food coloring, alkaseltzer, balloons
Blackwell Campout fee
Rock Cut State Park Campsite
SCP- DISTRIBUTORS- 678 - Purchase SWIM DOLPHIN
Parking for IPRA Conference
CPRP Renewal
Food Handler Certification
Lodging for IPRA Conference
Cart for Rec Office
Office supplies
Office supplies
Staff Apparel
Supplies for pop up program
Supplies for Music Room
Supplies for New Programs
Supplies for new programs
Supplies for pop up program
Supplies for pop up program
Bank fee for EPACT
EPACT Program for Camps
Deposit for Camp Trip CIT
Music for Holiday Party - 2021
Sod Staples - 2021
Green and White Directional Markers - 2021
Lake County Food Permit
Golf Pencils - Sunset Valley
Golf Pencils - Highland Park Learning Center
IPRA Parking
IPRA Parking Refund
IPRA Parking
IPRA Parking
IPRA Taxi
WWP ROSE PEST SOLUTION - Purchase
CRAFTWOOD LUMBER & HAR - Purchase
BATTERIES PLUS #0576 - Purchase
HD SUPPLY FACILITIES - Purchase
BATTERIES PLUS #0576 - Credit
ZORO TOOLS INC - Purchase
AMZN Mktg US AW0UW7Z03 - Purchase
THE HOME DEPOT #1926 - Purchase
GRAINGER - Purchase
GRAINGER - Purchase
GRAINGER - Purchase
GRAINGER - Purchase

GRAINGER - Purchase
GRAINGER - Purchase
GRAINGER - Purchase
GRAINGER - Purchase
MUTUAL ACE HARDWARE & - Purchase
ACE HARDWARE - Purchase
MUTUAL ACE HARDWARE & - Purchase
HALOGEN SUPPLY COMPANY - pool chemicals
HALOGEN SUPPLY COMPANY - pool chemicals
HALOGEN SUPPLY COMPANY - Replacement acid pump
HALOGEN SUPPLY COMPANY - Pulsar parts
HP CHAMBER OF COMMERCE - annual membership
ipra conference lodging
FINANCE MEETING WITH GLENVIEW PD / Misc. beverages
irs 1096/1099 postage
legal notice 12/14/21
service dates 1/5/22-2/4/22
service dates 12/17/21-1/16/22
WEstridge Center service from 1/13/22-2/12/22
service from 1/15/22-2/14/22
service from 12/17/21-1/16/22
service from 1/15/22-2/14/22
service dates from 1/5/22-2/4/22
service from 12/17/22-1/16/22
service from 1/15/22-2/14/22
canon 8400 seervice jan 2022
cannon service Jan 2022
service from 12/17/21-1/16/22
service from 1/15/22-2/14/22
service dates from 1/5/22-2/4/22
service from 12/17/21-1/16/22
service from 1/15/14-2/14/22
service from 12/17/21-1/16/22
service from 1/15/22-2/14/22
service dates from 1/5/22-2/4/22
service from 12/17/21-1/16/22
servicce from 1/15/22-2/14/22
service from 1/5/22-2/4/22
service from 12/17//21-1/16/22
service from 1/15/22-2/14/22
service from 12/17/21-1/16/22
service from 1/15/22-2/14/22
service from 12/17/21-1/16/22
service from 1/15/22-2/14/22
service from 12/17/21-1/16/22
service from 1/15/22-2/14/22
service from 12/17/21-1/16/22
service from 1/15/22-2/14/22
service from 12/17/21-1/16/22
service from 1/15/22-2/14/22
service from 12/17/21-1/16/22
service from 1/15/22-2/14/22
service dates 1/15/21-1/14/22
service from 12/17/16-1/16/22
Centennial service date 1/9/22-2/8/22
service from 1/15/22-2/14/22

service from 12/17/21-1/16/22
SERVICE FROM 1/15/22-2/14/22
service from 12/17/21-1/16/22
svgc wifi service 1/7/22-2/6/22
service from 1/15/22-2/14/22
service from 1/5/22-2/4/22
service from 12/17/21-1/16/22
service from 1/15/22-2/14/22
service from 1/5/22-2/4/22
service from 12/17/21-1/16/22
service from 1/15/22-2/14/22
service from 12/17/21-1/16/22
service from 1/15/22-2/14/22
service fro 12/17/21-1/16/22
SERVICE FROM 1/15/22-2/14/22
service from 1/5/22-2/4/22
service from 12/17/21-1/16/22
SERVICE FROM 1/15/22-2/14/22
service from 1/5/22-2/4/22
service from 12/17/21-1/16/22
service dates 1/14/22-2/13/22Purchase
SERVICE FROM 1/15/22-2/14/22
SUNSET PARK GFI COVERS
Work Boots
Sunset Field House
Wet light
Wet Light return credit
West Ridge Bulbs Marketing Office
Sunset Golf cart Barn security light
GRAINGER - Purchase
Deer Creek EM Lights
Deercreek Bulbs
Dean Creek Light -EM Door
Caulk for Deer Creek Light
Deercreek Light fixture
Deer Creek Men's Bath area Light fixture
Heller Light Fixture
Desk Calendar
Outdoor Pens, planner
Membership Renewal
Supplies
Hose Clamp and Hose
Oil Filter and Gauges
Textron torque wrench
ceramics supplies
RETURN - Ceramics supplies
ceramics supplies
POGO Breakroom clock
Batteries for Doors
Return Faucet sensor cunniff
Bathroom Faucet Refund
Rosewood Shed Roof

Bathroom Faucet Refund
Cunniff Bathroom Faucet Replacement
Sunset Woods Fence Repair
Sunset Woods Fence Repair
SUNSET ENTRANCE DOOR WINDOW
Rosewood Shower Tower
Shower Return Credit
Deer Creek Stand off for Banner
WD-40
Washer Fluid
Wash Towels for Trucks
Car Wash Brush interior cleaner
All Trucks Snow Brushes
Shop Towels
WD-40
Electric Tape
Electric Tape
Utility Knife Blades
Dual Drive Ratchet for Truck #143
Propane Gas Little Torches
Propane Torch Head's
Steel Toe Shoes
Van #112 Filters
Van #112 Wiper Blades
Van #111 Headlights
Truck #820 Wiper Blades
First Aid Kits/Fire Extinguisher
Truck #143 Tailgate Cables
Truck #143 Filters
Truck #142 Silicone
15 Oil Drain Plugs
Ford Pickup Stuck
#143 Oil Switches
Wrong wiper blades credit
NAPA AUTO PARTS HIGHLAN - Purchase
Truck #147 Wiper's
Truck #191 Filters
Truck #835 Wiper Blades
Snowblower and carburetor relay
Kubota ATV Filters
Blowers Spark Plug
Rosewood #303 Kubota ATV X900
#816 Air Compressor
Husqvarna seeder PT22 #530
Carburetor for Tamper
Chipper Filters
#304 Kubota ATV 500
Filters Baseball Machine
Fuel Treatment
TRUCK #131 FIRST AID
TRUCK #124 BRAKES
Truck #124 Muffler Clamps

Brake Fluid
Truck #129 #128 Wiper Blades
Truck #124 Wiper Blades
Truck #131,#130 Wiper Blades
Truck #124 Wiper Blades
Truck #128 Wiper Blades
Truck #126 Taillights
Truck #130 Wiper Blades
Warning Light Beacon truck \$123
Truck #127 Headlights
Toro Z Filters
Kubota Mower Front wheel
Filters #397 Kubota Mower
Echo Brush Blades
Refund for IPRA Conference Cancellation
Refund for IPRA Conference Cancellation
Refund for IPRA Conference Cancellation
Registration office supplies
Registration supplies for front desk
Member experience decor
Member experience decor
Member experience decor
folders
AEREX PEST CONTROL
ski boot sole inserts
write out, envelopes, pens, tape, staples
markers
tape
marker
4th quarterly invoice for 2021 EcoRest at Highmoor
Chain for MS261
Clearing saw FS560C-EM
Painting Materials
Tire Recycling
Tire Recycling
Tire Recycling
IPRA CONFERENCE ACCOMMODATIONS
incidental water
incidental water
ipra conference lunch meeting - peters/romes
IPRA/IAPD ANNUAL CONFERENCE
conference dinner meeting - 6 staff (rec, finance, aquatics, ed)
ipra conference lodging
Vaccume Cleaner for Offices
Preemployment Screenings
Preemployment Screenings
EFAX SERVICES
Amazon Office Supplies (Folders)
Job Posting : Building Coordinator
IPRA Job Posting: Facility Engineer - District Wide
Trash Bags, Soap, Toilet Paper, Paper Towels,
EFAVORMART.COM -KN 95 Masks

EFAVORMART.COM - Face mask
Gojo Soap, Toilet Paper, Multyfoldtowels
Windex, Steel Cleaner, trash Bags and Pink Soap
Gym Wipes
BODY ONE PRODUCTS -Gym Wipes
OFFICESUPPLY.COM -Wipes
Vacuum Cleaner, Toilet Paper and Multyfoldtowels
Hand warmers
Custodial Supplies
Polebarn Keys
Stain Remover
Bench Refinishing Supplies
Sanding Disks
Bench Refinishing supplies
Bench Refinishing Suplplies
Bench Refinishing Supplies
Trash Can Refinishing supplies
Supplies for Sunset Outdoor Ice
Countertop Finish
Paint for Rec Office
Westridge Painting Supplies
Westridge Painting supplies
Westridge Paint supplies
Drywall Repair Supplies
Westridge Painting Supplies
westridge Painting supplies
Drywall Repair Tools-Rec Offices
Westridge Paint
Westridge Paint supplies
Westridge Painting Supplies
Club House
Golf Course office supplies
Golf Course Tee Markers
Golf Course Tee markers
Tee Markers
Skidster Golf Course
Skid Ster Golf Course
Solo cart Batteries
Solo cart batteries
Solo Rider cart battery credit
Golf Course Utility Carts
Golf Course Green Mowers
Solo Golf Cart Club house
Solo Golf Cart Club house
Cart credit for Batteries
Golf Course Mower tires
Oil Filters
HPCC Range Sprayers
Rotating disc
Golf Course shop supplies
Conference Refund
GoPro Inc. - Purchase

Mighty Oaks Supplies
Mighty Oaks Supplies
Mighty Oaks Supplies
Mighty Oaks Supplies
Mighty Oaks Supplies
Mighty Oaks Supplies
Mighty Oaks Supplies
Mighty Oaks Supplies
IPRA Conference transportation AS
Conference - Credit
Grommets
Online Store Sample Order
Online Store Sample Order
New Resident Mailer
QR Code Subscription
QR Code Subscription
Vinyl
Vinyl and Adhesive Vinyl
Extension Cord
Park Shop
Sales tax refund - Park Shop
Sales tax refund - Park Shop
Banner Tape
Zoom membership
digital voice recorder
LTS staff membership
IPRA Refund
HELP training - Erik K
EAP supplies
EAP Supplies
cleaning supplies
fabuloso
paper towels
music and aux cords
office supplies
TOI jackets
TOI costume
olympic week supplies - skating
olympic week supplies - skating
olympic week supplies - skating
TOI Team competition registration
Little Gymnasts craft supplies
Ice show costumes
Ice show costumes
ice show costume
show costume
Camp field trip deposit - Whirleyball/Lasertag
GPS Field trip deposit
Sprouts supplies
Sprouts supplies
Sprouts supplies
Sprouts supplies

Sprouts supplies
Sprouts supplies
Sprouts supplies
Sprouts supplies
Sprouts supplies
Sprouts supplies
Garbage Can
NozZles for Fink Garage
Kai Tobin work Boots
Hotel - IPRA Conference 2022_Liz Visteen & Angie Fee
ServSafe Food Handlers Course - L. Visteen
Office supplies - shelves, storage bins, bulletin board
Office supplies - Phone Stand
Office supplies - phone stand, self adhesive paper, tools
Glaze bucket dollies for Ceramics Studio
Babysitting class supplies
Babysitting class supplies
Babysitter Manuals for participants
Leprechaun Hunt supplies
Leprechaun Hunt supplies
Leprechaun Hunt supplies
Pop-up event supplies - bins
Babysitting certificates
HeArts & Crafts supplies
HeArts & Crafts Supplies
Harry Potter Trivia supplies
#835 hydraulic tank rebuild
#835 alignment, repairs
supplies
ILLINOIS ASSOCIATION O - Credit
Facebook - Camp DECEMBER
Facebook - Camp JANUARY
Facebook - Fitness DECEMBER
Comcast Service
Court Clocks
Envelopes
Stringing Service
Pickleball Paddles